



Relaxing Floors

chillD restD mellowD Fractal Ground



Seemingly random shapes and forms found in nature often appear haphazard. But upon closer inspection, there is a structure underlying these natural arrangements. And as we look closer and closer, the patterns repeat over and over. These are fractals.



When we look at a tree, first we see big branches growing out of the trunk, then we see smaller branches growing out of each big branch. As we keep zooming in, finer and finer branches appear, all the way down to the smallest twigs.

In basing design on the stress-reductive quality found in fractals, the transdisciplinary team of 13&9 Design, Fractals Research, and Mohawk Group are tapping into our deep-seated desire to see patterns, to connect to nature and to have more inspiring and relaxing environments in which to live and work.





restD 967 Pause, Fractal Ground 949 Easy Breezy (Brick Ashlar Installation)

Collaborators

DESIGNERS, THINKERS, MAKERS



Left to right: Richard Taylor, PHD, Founder of Fractals Research; Jackie Dettmar, VP of Design and Product Development, Mohawk Group; Anastasija and Martin Lesjak, CEOs, 13&9 Design.

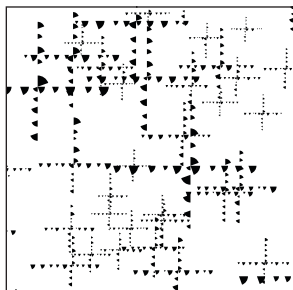
Fractals are the building blocks of many of nature's patterns and have been scientifically proven to reduce stress and so provide benefits to physical health. This visual language is the basis for Relaxing Floors, a modular system designed by 13&9 in collaboration with Fractals Research and Mohawk Group.

Relaxing Floors is the culmination of art, science and human-centered design based on fractal patterns. Utilizing fractals gives our eyes a break from the digital world and delivers the essence of nature to the contract build environment.

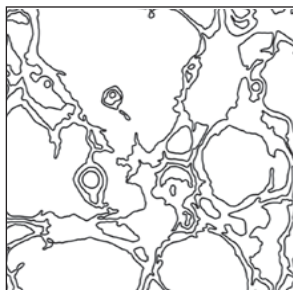




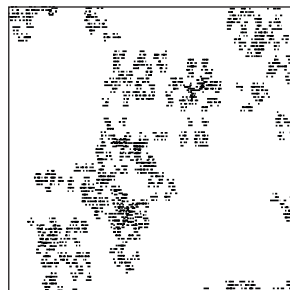
Although all fractals are complex, the level of complexity varies between patterns. This complexity is measured by a parameter labeled D . Patterns with mid-range complexity—a mid- D value—are the most common in natural scenery and it is these patterns that reduce the observer's stress-levels. All of the Relaxing Floors patterns have been optimized to have a mid- D value—as denoted by the “ D ” suffix on each of the pattern names.



chillD is a computer generated fractal visual grounded by triangular segment-shaped seeds.



restD is an organic design in which neurons twist and turn as they weave across the carpet.

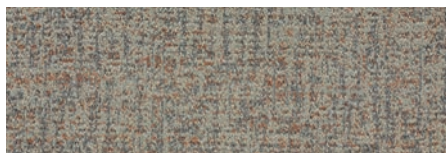
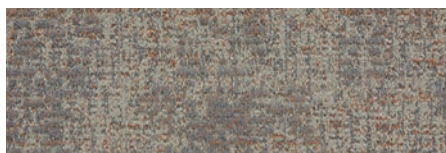
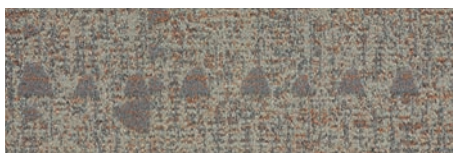


mellowD utilizes a line-shaped seed which repeats at different magnifications.

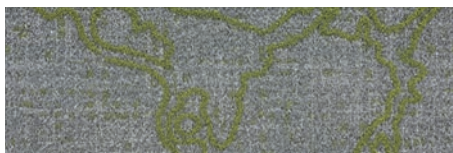
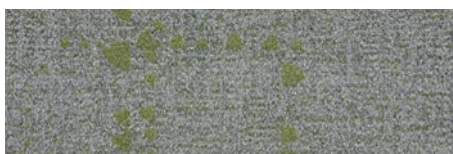
Fractal Ground offers a coordinating organic groundcover visual that may be used with any of the other patterns or by itself.



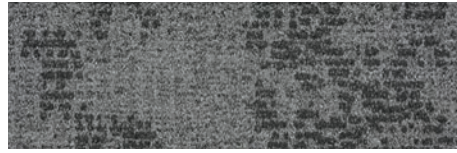
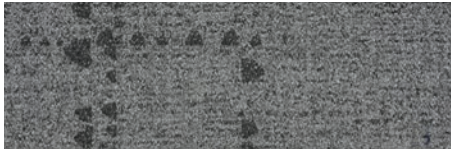
829 Focus



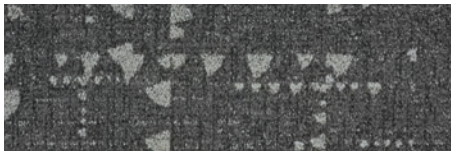
922 Sanctuary



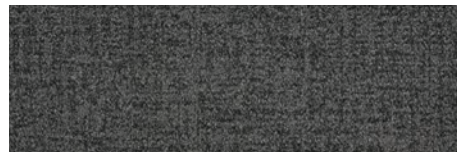
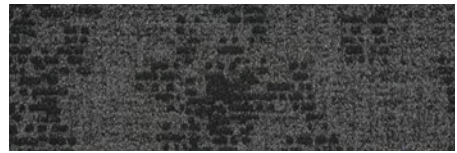
946 Awakening



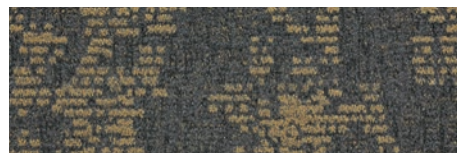
949 Easy Breezy



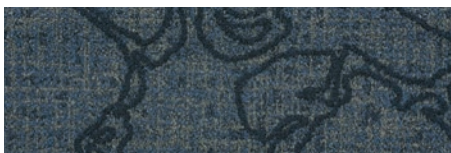
967 Pause



969 Solitude



961 Harmony



965 Blue Bliss





chillD 965 Blue Bliss (Brick Ashlar Installation)
Opposite: Fractal Ground 949 Easy Breezy (Brick Ashlar Installation)



Area Rug Program

Mohawk Group believes in empowering architects and designers with the tools to achieve their vision. With the Area Rug Program, we expand the palette by merging the design of broadloom with the scale and versatility of area rugs. Simply put, Mohawk Group's broadloom offerings may now be transformed into beautiful area rugs in a few simple steps.

MOHAWK GROUP AREA RUGS

- Anchor large workspaces and intimate seating areas with added warmth and luxury
- Unify small and unique spaces
- Provide a refined foundational layer for bright and complex accent notes
- Protect hard surfaces
- Reduce noise and create quiet, contemplative spaces

HOW TO ORDER

1. Select your area rug style and color
2. Determine the size for your rug (LxW)
The maximum rug size is 15' x 45'
3. Determine the serging colorways or binding types
4. Determine if a rug underlayment will be needed
5. Submit information along with ship-to details in one of three ways:
 - Contact your Mohawk Group Account Executive
 - Email custom_cs@mohawkind.com
 - Call 800.622.6228 ext. 45273

Mohawk Group Customer Service will contact you with the order confirmation including final cost.



Connecting Neurons 956 Calaratta

Specifications

Relaxing Floors Collection

chillD GT424, Fractal Ground GT425, mellowD GT426, restD GT427
Carpet Plank

DESIGN

Size	12" x 36" (.3048m x .9144m)
Surface Appearance	Textured Patterned Multi-Colored Loop
Fiber Type	Duracolor® Tricor Premium Nylon
Dye Method	Solution Dyed
Installation Methods	Monolithic / Monolithic Stepping / Half-Lap / Plank Half-Lap / Brick Ashlar / Random / Herringbone / Basket Weave
Colors Available	8

PERFORMANCE

Construction	Tufted
Gauge	1/12" (47.00 rows per 10cm)
Stain Release Technology	Permanent, Built into the Fiber
GSA Stain Release Rating	Passes
Soil Release Technology	EcoSentry Soil Protection
Backing Material	EcoFlex™ NXT
Flammability	ASTM E 648 - Class 1 (Glue Down)
Smoke Density	ASTM E 662 - Less than 450
Static Propensity	AATCC - 134 Under 3.5 KV

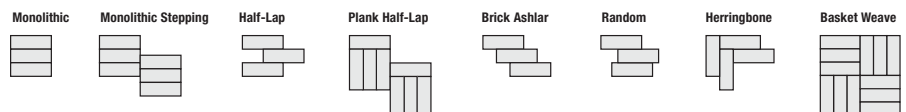
SUSTAINABILITY

Certification	Living Product Challenge Petal Certified; Declare Red List Free
Indoor Air Quality	Green Label Plus Certified #1171
NSF 140	Gold

SERVICE

Warranties	Lifetime Limited Carpet Tile Warranty, Lifetime Limited Duracolor Stain Warranty, Lifetime Static
------------	---

Installation Instructions:



Mohawk Group warrants its adhesives for the life of the original installation only when a Mohawk Group style (product) is installed. Mohawk's floor preparation procedures must be followed to ensure that the substrate has been prepared properly. Failure to use Mohawk Group adhesives or to follow Mohawk's floor preparation procedures will void all lifetime adhesive warranties. Please contact your local Sales Representative for installation guidelines.

These patterns contain inherent characteristics which may result in pattern run off and/or pattern appearance variations at the seams or tile edges (darker or lighter pattern lines). These characteristics are inherent in the patterns and are not manufacturing defects. Consideration to these characteristics should be given when selecting an installation method.

Chair pads are recommended under office chairs with roller casters to preserve appearance retention, act as a deterrent toward delamination and to prevent premature or accelerated wear. Walk-off tiles from the Tuff Stuff II Collection are recommended at entryways to reduce soiling.

Mohawk Group is providing this architect folder for the purpose of promoting our commercial business. This folder and its samples shall remain the property of Mohawk Group. Color may vary from dye lot to dye lot. Substitution of material may be made due to improved technology, supply limitations or other factors. The performance of this product is not affected by such variations.

For current and complete specifications please visit www.mohawkgroup.com

All product designs presented in this brochure copyright Gensler 2018.



877-3RE-CYCL

Produced with recycled materials



Mohawk Group

Mohawk Group
160 South Industrial Blvd.
Calhoun, GA. 30701
1-800-554-6637
mohawkgroup.com

GT424 PHOTO BROCHR LT