



Telling Spaces

Humble Existence



Humble 859 Expedition (Broadloom Installation)

Humble

COLORWAYS



Adventure
141



Crossing
711



Exploration
731



Course
858



Expedition
859



Odyssey
869



Passage
889



Quest
945



Route
948



Trek
965



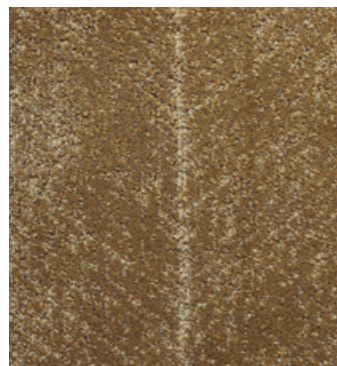
Sojourn
975



Journey
989

Existence

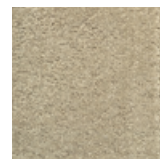
COLORWAYS



Adventure
141



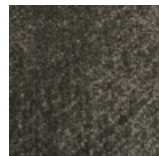
Crossing
711



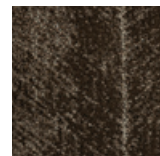
Exploration
731



Course
858



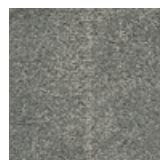
Expedition
859



Odyssey
869



Passage
889



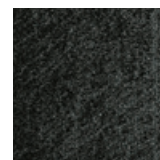
Quest
945



Route
948



Trek
965



Sojourn
975



Journey
989



Existence 859 Expedition (Broadloom Installation)
Cover: Existence 859 Expedition (Broadloom Installation)

Area Rug Program

Mohawk Group believes in empowering architects and designers with the tools to achieve their vision. With the Area Rug Program, we expand the palette by merging the design of broadloom with the scale and versatility of area rugs. Simply put, Mohawk Group's broadloom offerings may now be transformed into beautiful area rugs in a few simple steps.

MOHAWK GROUP AREA RUGS

- Anchor large workspaces and intimate seating areas with added warmth and luxury
- Unify small and unique spaces
- Provide a refined foundational layer for bright and complex accent notes
- Protect hard surfaces
- Reduce noise and create quiet, contemplative spaces

HOW TO ORDER

1. Select your area rug style and color
2. Determine the size for your rug (LxW)
The maximum rug size is 15' x 45'
3. Determine the serging colorways or binding types
4. Determine if a rug underlayment will be needed
5. Submit information along with ship-to details in one of three ways:
 - Contact your Mohawk Group Account Executive
 - Email custom_cs@mohawkind.com
 - Call 800.622.6228 ext. 45273

Mohawk Group Customer Service will contact you with the order confirmation including final cost.





Personal Studio

FLOORING PERSONALIZED BY YOU

Introducing Personal Studio (p.s.), our innovative design personalization tool that allows you to put your own flair to our running line products, so you can make designs as unique as your project.

p.s. was developed to provide you with a tool that will allow you to streamline your efforts and respond quickly.



Visualize In A Room

You can personalize the color in any design from our selection of soft surface products, visualize it in a room scene, and order digital, print or physical samples easily.

Photorealistic Simulations

Personal Studio uses photorealistic simulations of the cut and loop textures of our PDI Synthesis bases and our CYP, Definity and tufted constructions so your designs are very close to the final product.

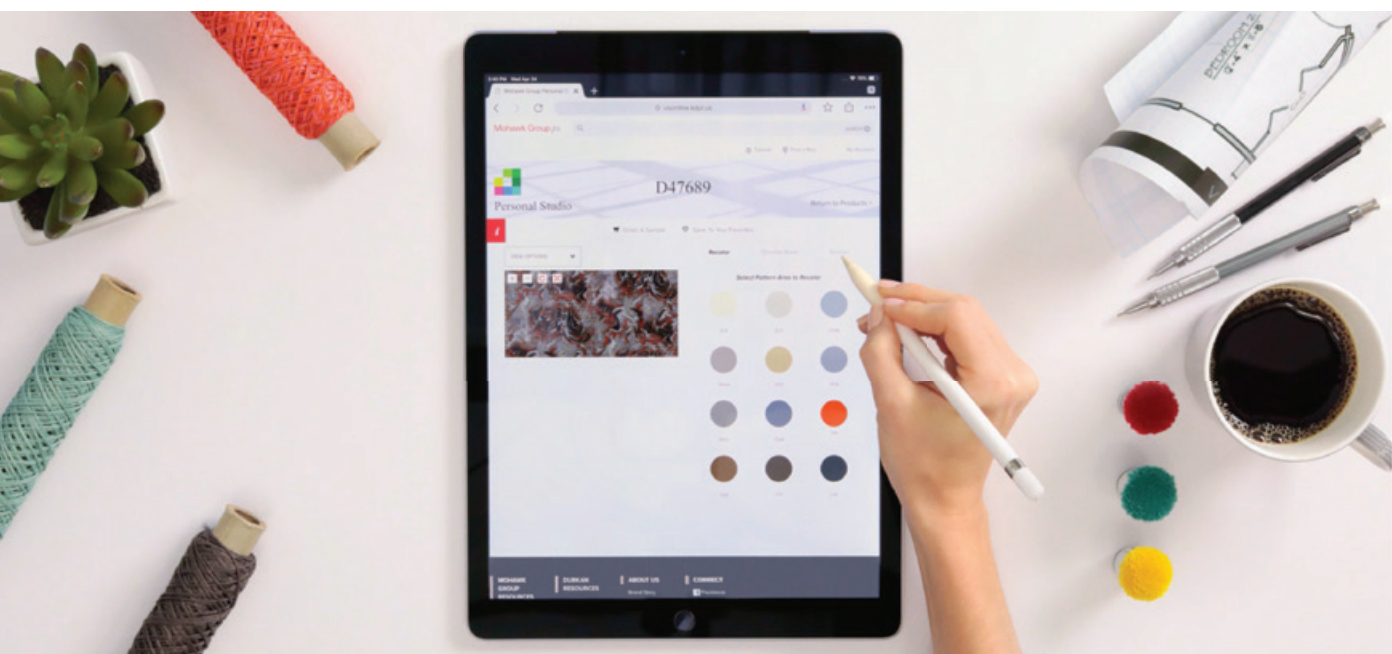
Find The Perfect Color

You can quickly iterate through multiple colorways and patterns to find the perfect fit for your project.

Multiple Projects

Save your favorite personalized products per project, and easily switch between them in an easy interface.

Explore: <https://ps.mohawkgroup.com/>



Specifications

Humble KC227
Existence KC229

DESIGN

Size	12' width (3.66m)
Surface Appearance	Patterned Tip Shear
Fiber Type	Colorstrand® SD Nylon
Dye Method	Solution Dyed
Pattern Repeat	
Humble	18" (W) x 37.04" (L)
Existence	18" (W) x 43.72" (L)
Colors Available	12

PERFORMANCE

Construction	Tufted
Gauge	1/12" (47.00 rows per 10cm)
Stain Release Technology	EcoSentry Plus Stain Protection
Soil Release Technology	EcoSentry Soil Protection
Backing Material	Unibond Plus
Flammability	ASTM E 648 - Class 1 (Glue Down)
Smoke Density	ASTM E 662 - Less than 450
Static Propensity	AATCC - 134 Under 3.5 KV

SUSTAINABILITY

Certification	Declare Red List Free
Indoor Air Quality	Green Label Plus #3802
NSF 140	Gold

SERVICE

Warranties	Lifetime Limited Unibond® Plus Warranty, Lifetime Limited Colorfastness to Light, 10 Year Limited Colorfastness to Atmospheric Contaminants, 10 Year Limited Stain Warranty, Lifetime Static
------------	--

Mohawk Group warrants its adhesives for the life of the original installation only when a Mohawk Group style (product) is installed. Mohawk's floor preparation procedures must be followed to ensure that the substrate has been prepared properly. Failure to use Mohawk Group adhesives or to follow Mohawk's floor preparation procedures will void all lifetime adhesive warranties. Please contact your local Sales Representative for installation guidelines.

These patterns contain inherent characteristics which may result in pattern run off and/or pattern appearance variations at the seams or tile edges (darker or lighter pattern lines). These characteristics are inherent in the patterns and are not manufacturing defects. Consideration to these characteristics should be given when selecting an installation method.

Chair pads are recommended under office chairs with roller casters to preserve appearance retention, act as a deterrent toward delamination and to prevent premature or accelerated wear. Walk-off tiles from the Tuff Stuff II Collection are recommended at entryways to reduce soiling.

Mohawk Group is providing this architect folder for the purpose of promoting our commercial business. This folder and its samples shall remain the property of Mohawk Group. Color may vary from dye lot to dye lot. Substitution of material may be made due to improved technology, supply limitations or other factors. The performance of this product is not affected by such variations.

For current and complete specifications please visit www.mohawkgroup.com



♻️ Produced with recycled materials

