



Nordstrom Rack Skyview Mall

Functional Fashion Takes on the Challenge

RETAIL SQUARE

Before clothier Nordstrom Rack could move into a new space in the Skyview Shopping Center in Flushing, New York, it had to “dress up” the floor.

“The Skyview store had specific needs,” said Sarah Walker, Nordstrom Rack’s principal interior designer. “The floor was really damaged because of the way the slab was composed. There was unevenness in the floor where two different slabs intersected as well as a significant amount of cracking, flaking and dusting, due to the variety of floor prep done by previous tenants.” The shopping center is only four years old but needed significant work done.

Nordstrom Rack, which is headquartered in Seattle, Washington, has 300 stores in its fleet. The company schedules three store remodels and 26–28 new store openings a year, and Walker oversees all the interior design nationwide.

When Walker began assessing the Skyview job, she soon realized that floating a new slab would be too expensive and take too much time. So, instead, she chose to patch the concrete in various places to level out the floor and prevent further dusting. Then she looked for a luxury vinyl tile (LVT) that was thick enough to hide the unevenness of the floor and stand up to the heavy traffic of bargain-hunting shoppers.

PROJECT SNAPSHOT

Project
Nordstrom Rack
Skyview Mall Flushing NY (Queens)
35,000 square feet

Location
Flushing, New York (Queens)

Website
www.nordstromrack.com

Materials
Hot & Heavy LVT and Ground Strata modular tile

Project Lead
Sarah Walker, Principal Designer,
Nordstrom Rack

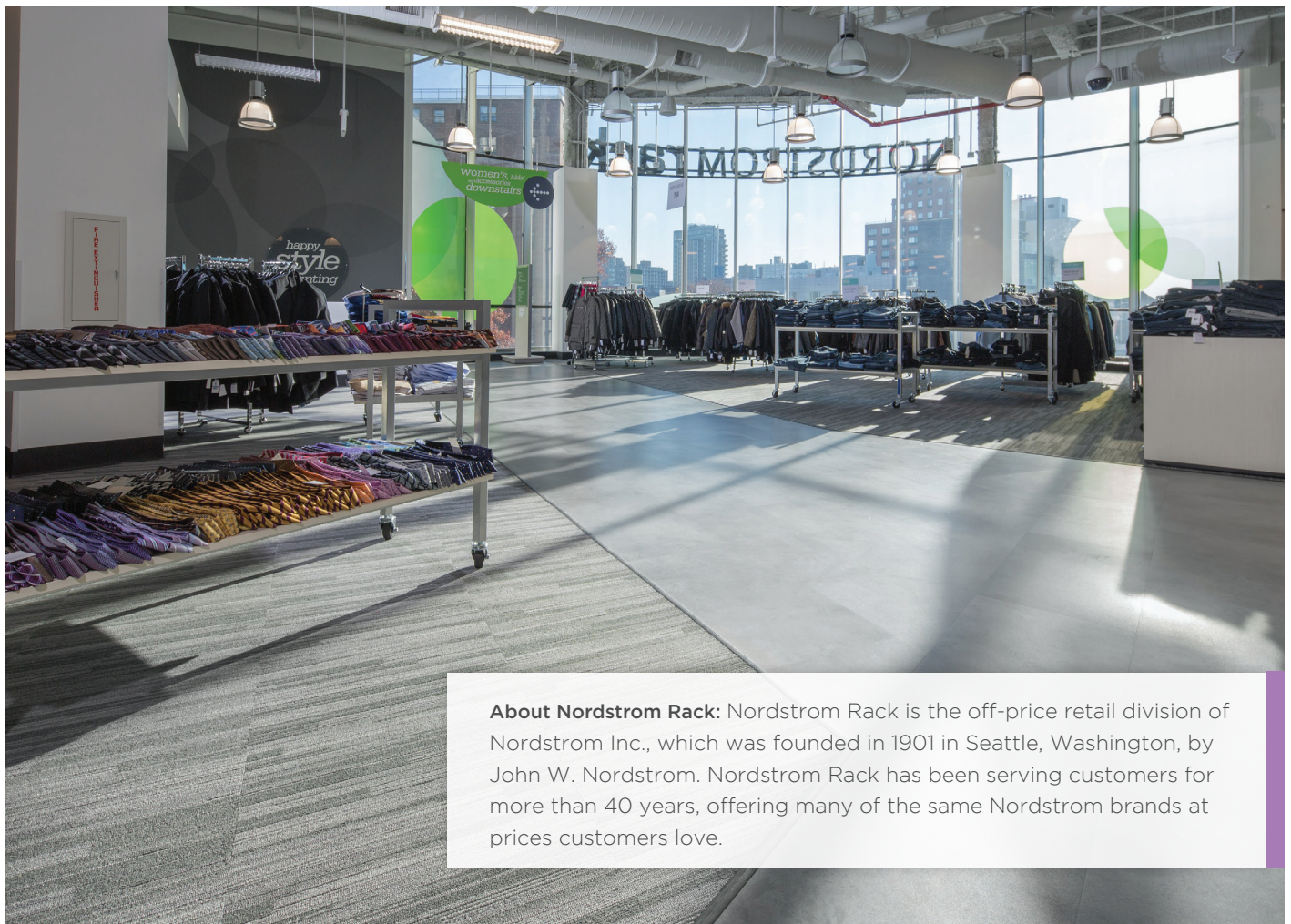


FUNCTIONAL FASHION TAKES ON THE CHALLENGE



Greg Whitman, of Mohawk, suggested Bolder from the company's Hot & Heavy LVT collection to meet the installation's structural and aesthetic needs. "Part of our design aesthetic is the polished concrete look," said Walker, "and the problem I've had in the past with similar LVT 'concrete' is that the tile has a green cast, is much too dark or doesn't look realistic. I also needed something that would complement a cool gray carpet with a modern, understated pattern."

Bolder in the color Pebble had that authentic polished concrete look Walker was searching for plus it could be installed loose lay with perimeter glue. Walker chose Ground Strata, a 21-ounce modular tile product made of easy-to-maintain Duracolor premium nylon, to work with Bolder. Mohawk created a custom color—Nordic Sky—for the Skyview installation. ■



About Nordstrom Rack: Nordstrom Rack is the off-price retail division of Nordstrom Inc., which was founded in 1901 in Seattle, Washington, by John W. Nordstrom. Nordstrom Rack has been serving customers for more than 40 years, offering many of the same Nordstrom brands at prices customers love.