

**HOT AND HEAVY**

Lineate C0089

9.38 in x 59.38 in LVT

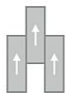


<b>Collection</b>	Hot and Heavy
<b>Style</b>	Lineate (C0089)
<b>Product Type</b>	LVT
<b>Size</b>	9.38 in x 59.38 in
<b>Construction</b>	Commercial LVT
<b>Gauge</b>	5 mm
<b>Total Thickness</b>	5 mm
<b>Wear Layer</b>	20 mil (0.5 mm)
<b>Finish</b>	M-Force™ Ultra
<b>Edge Profile</b>	Squared
<b>Installation</b>	Glue Down
<b>Recommended Adhesive</b>	M95.0, M99, MS160, M700 Plus, or Total Bond Adhesive

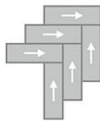
**Recommended Installation Methods**



Brick Ashlar



Half Lap



Herringbone

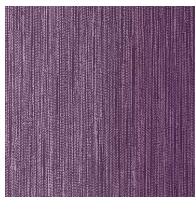


Random

**Colorways**



**Barred**  
Color: 232



**Stripe**  
Color: 444



**Strake**  
Color: 565



**Ridged**  
Color: 588



**Variegated**  
Color: 646



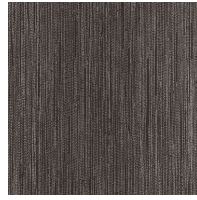
**Lines**  
Color: 656



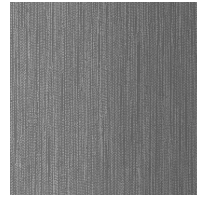
**Parallel**  
Color: 741



**Marker**  
Color: 857



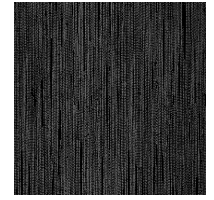
**Groove**  
Color: 868



**Figured**  
Color: 948



**Cord**  
Color: 957



**Striated**  
Color: 988

## Testing

<b>Classification</b>	(ASTM F1700) Class III, Type B, Embossed
<b>Squareness</b>	(ASTM F2421) ±0.10 in
<b>Size and Tolerance</b>	(ASTM F2421) ±0.016 in
<b>Thickness</b>	(ASTM F386) ± .005 in
<b>Flexibility</b>	(ASTM F137) Passes
<b>Dimensional Stability</b>	(ASTM F2199) Passes
<b>Static Load Limit</b>	(ASTM F970) 1000 psi
<b>Lightfastness</b>	(ASTM F1515) Passes
<b>Residual Indentation</b>	(ASTM F1914) Passes
<b>Resistance to Chemicals</b>	(ASTM F925) Passes
<b>Resistance to Light</b>	(ASTM F1515) Passes
<b>Resistance to Heat</b>	(ASTM F1514) Passes
<b>Radiant Flux</b>	(ASTM E648) Class 1
<b>Smoke Density</b>	(ASTM E662) = 450
<b>Wear Layer Thickness</b>	20 mil (0.5 mm)

## Sustainability

<b>Embodied Carbon</b>	11.9 kg CO2e/m2
<b>Carbon Handprint</b>	-12.5 kg CO2e/m2
<b>Beyond Carbon Neutral</b>	-0.595 kg CO2e/m2
<b>EPD</b>	<a href="#">Vinyl Tile EPD</a>
<b>Material Health</b>	Free of Orthophthalates and Heavy Metals
<b>LEED</b>	<a href="#">Calculate LEED on Ecomedes</a>
<b>Mindful Materials</b>	Participates in Mindful Materials Library
<b>MindClick Rating</b>	Achiever
<b>Country of Origin</b>	South Korea

## Packaging

---

Square Feet Per Carton	22.84
Pieces Per Carton	6
Cartons Per Pallet	64

## Warranties

---

[Limited 20 Year M-Force Ultra Commercial Warranty](#)