

## Harmonic Waves

### Overview

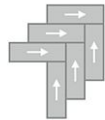
Feature	Description
Collection	Link Step
Style	Harmonic Waves (C2101)
Product Type	LVT
Size	18 in x 36 in
Construction	Light Commercial LVT
Gauge	2 mm
Total Thickness	2 mm
Wear Layer	12 mil (0.3 mm)
Finish	Enhance Urethane
Edge Profile	Squared Edge
Installation	Glue Down
Installation Method	Brick Ashlar, Herringbone, Random
Recommended Adhesive	M95.0, MS160 or M700 Plus



### Recommended Installation Methods



Brick Ashlar



Herringbone



Random

### Colorways



#### Elevated Silver

Color code: 818  
Style number: C2101



#### Affinity Suede

Color code: 838  
Style number: C2101



#### Unified Tone

Color code: 842  
Style number: C2101



#### Haute Confluence

Color code: 848  
Style number: C2101



#### Embracing Ember

Color code: 868  
Style number: C2101



#### Radiating Shadow

Color code: 942  
Style number: C2101

## Colorways



### Connecting Cool

Color code: 945  
Style number: C2101

## Testing

Feature	Description
Classification	(ASTM F1700) Type B - Embossed
Squareness	(ASTM F 2421) ±0.10" max
Size and Tolerance	(ASTM F2421) Passes
Thickness	(ASTM F386) ±0.005"
Flexibility	(ASTM F137) Passes
Dimensional Stability	(ASTM F2199) Passes
Static Load Limit	(ASTM F970) 1000 psi
Residual Indentation	(ASTM F1914) Passes
Resistance to Chemicals	(ASTM F925) Passes
Resistance to Light	(ASTM F1515) Passes
Resistance to Heat	(ASTM F1514) Passes
Radiant Flux	(ASTM E648) Class 1
Smoke Density	(ASTM E662) <450
Wear Layer Thickness	12 mil (0.3 mm)
Lightfastness	(ASTM F1515) Passes
Light Reflectancy	56

## Sustainability

Feature	Description
Embodied Carbon	11.9 kg CO2e/sq m2
Beyond Carbon Neutral	-0.279
Country of Origin	Imported

## Packaging

Feature	Description
Pieces per Carton	12
Weight per Piece (lbs)	2.9
Cartons Per Pallet	50
Square Feet per Carton	54
Weight per Carton (lbs)	34.4

## Warranties

---

Limited 10 Year Light Commercial Warranty, 25 Year Residential Warranty