

HOT AND HEAVY II

Chromascope 2.5 C2113

18 in x 36 in LVT

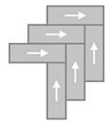


Collection	Hot and Heavy II
Style	Chromascope 2.5 (C2113)
Product Type	LVT
Size	18 in x 36 in
Construction	Commercial LVT
Total Thickness	2.5 mm
Wear Layer	20 mil (0.5mm)
Finish	M-Force™ Ultra
Surface Profile	Overall
Edge Profile	Squared
Installation	Glue Down
Recommended Adhesive	M95.0, M99, MS160, M700 Plus, or Total Bond Adhesive

Recommended Installation Methods



Brick Ashlar



Herringbone



Monolithic



Random

Colorways



Buff Ivory
Color: 120



Tan Essence
Color: 230



Peach Bliss
Color: 237



Melon Harmony
Color: 248



Cozy Linen
Color: 250



Warm Haven
Color: 270



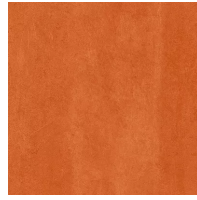
Muted Maroon
Color: 344



Radiant Gold
Color: 360



Crimson Glow
Color: 374



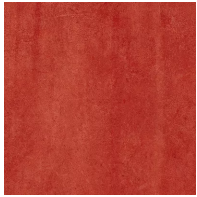
Orange Embrace
Color: 440



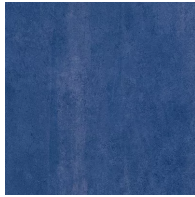
Purple Dream
Color: 475



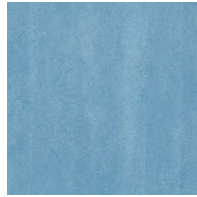
Violet Cascade
Color: 540



Red Flame
Color: 550



Regal Blue
Color: 555



Soft Sky
Color: 620



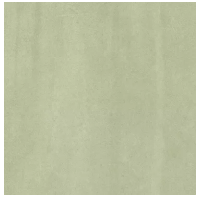
Serene Navy
Color: 650



Tranquil Teal
Color: 672



Celestial Forest
Color: 676



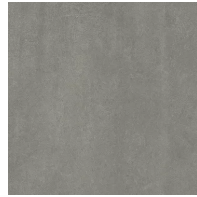
Fresh Sprout
Color: 760



Restorative Green
Color: 790



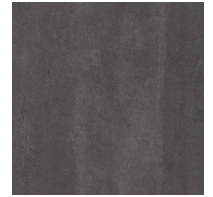
Gentle Haze
Color: 910



Balanced Charcoal
Color: 940



Whispering Grey
Color: 960



Grounded Black
Color: 980

Testing

Classification	(ASTM F1700) Class III, Type B - Embossed
Squareness	(ASTM F2421) Passes - ± 0.10 " max
Size and Tolerance	(ASTM F2421) Passes
Thickness	(ASTM F386) ± 0.005 "
Flexibility	(ASTM F137) Passes
Dimensional Stability	(ASTM F2199) Passes
Static Load Limit	(ASTM F970) Passes, modified at 1000 psi
Lightfastness	(ASTM F1515) Passes
Residual Indentation	ASTM F1914 - Passes, Avg less than 8%, Max Single Reading 10%
Resistance to Chemicals	(ASTM F925) Passes
Resistance to Light	(ASTM F1515) Passes
Resistance to Heat	(ASTM F1514) Passes
Radiant Flux	(ASTM E648) Class 1
Smoke Density	(ASTM E662) = 450
Slip Resistance	NFSI B101.1/B101.3 Slip Resistant Certified
Wear Layer Thickness	20 mil (0.5mm)

Sustainability

Embodied Carbon	6.43 kg CO2e/m2
EPD	Hot and Heavy II 2.5 mm EPD
LEED	Calculate LEED on Ecomedes

Packaging

Square Feet Per Carton	54
Pieces Per Carton	12
Cartons Per Pallet	48

Warranties

[Limited 20 Year M-Force Ultra Commercial Warranty](#)