

**HOT AND HEAVY II**

connectD 2.5 C2115

18 in x 36 in LVT

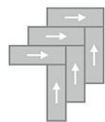


Collection	Hot and Heavy II
Style	connectD 2.5 (C2115)
Product Type	LVT
Size	18 in x 36 in
Construction	Commercial LVT
Surface Appearance	Embossed
Total Thickness	2.5 mm
Wear Layer	20 mil (0.5 mm)
Finish	M-Force™ Ultra
Edge Profile	Squared
Installation	Glue Down
Recommended Adhesive	M95.0, MS160, M700 Plus, FlexPress, or Total Bond Adhesive

**Recommended Installation Methods**



Brick Ashlar



Herringbone



Monolithic



Random

**Colorways**



**Buff Ivory**  
Color: 120



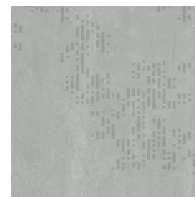
**Tan Essence**  
Color: 230



**Cozy Linen**  
Color: 250



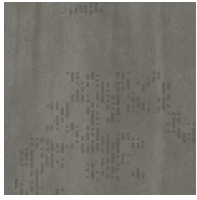
**Warm Haven**  
Color: 270



**Gentle Haze**  
Color: 910

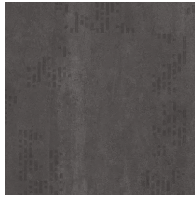


**Balanced Charcoal**  
Color: 940



**Whispering Grey**

Color: 960



**Grounded Black**

Color: 980

## Testing

Classification	(ASTM F1700) Type B - Embossed
Squareness	(ASTM F 2421) $\pm 0.10$ " max
Size and Tolerance	(ASTM F2421) Passes
Thickness	(ASTM F386) $\pm 0.005$ "
Flexibility	(ASTM F137) Passes
Dimensional Stability	(ASTM F2199) Passes
Static Load Limit	(ASTM F970) 1000 psi
Lightfastness	(ASTM F1515) Passes
Residual Indentation	(ASTM F1914) Passes
Resistance to Chemicals	(ASTM F925) Passes
Resistance to Light	(ASTM F1515) Passes
Resistance to Heat	(ASTM F1514) Passes
Radiant Flux	(ASTM E648) Class 1
Smoke Density	(ASTM E662) <450
Slip Resistance	NFSI B101.1/B101.3 Slip Resistant Certified
Wear Layer Thickness	20 mil (0.5 mm)

## Sustainability

Embodied Carbon	6.43 kg CO <sub>2</sub> e/m <sup>2</sup>
Beyond Carbon Neutral	-0.3215 kg CO <sub>2</sub> e/m <sup>2</sup>
Pre-Consumer Recycled Content	25%
EPD	Hot and Heavy II 2.5 mm EPD

## Packaging

Square Feet Per Carton	54
Pieces Per Carton	12
Cartons Per Pallet	48

## Warranties

---

[Limited 20 Year M-Force Ultra Commercial Warranty](#)