

## Stones 4.5

### Overview

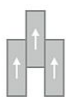
Feature	Description
Collection	Living Local
Style	Stones 4.5 (C2118)
Product Type	LVT
Size	12 in x 24 in
Construction	Commercial LVT
Total Thickness	4.5 mm
Wear Layer	20 mil (0.5 mm)
Finish	M-Force™ Ultra
Surface Profile	Embossed
Edge Profile	Squared
Installation	Glue Down
Installation Method	Brick Ashlar, Half Lap, Herringbone, Random
Recommended Adhesive	M95.0, M99, MS160, M700 Plus, or Total Bond Adhesive



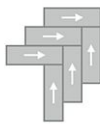
### Recommended Installation Methods



Brick Ashlar



Half Lap

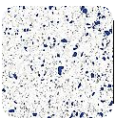


Herringbone



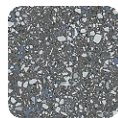
Random

### Colorways



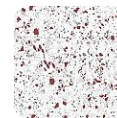
#### Randazzo

Color code: 725  
Style number: C2118



#### Somma

Color code: 985  
Style number: C2118



#### Vesuvius

Color code: 723  
Style number: C2118



#### Alabaster

Color code: 120  
Style number: C2118



#### Chiseled Edge

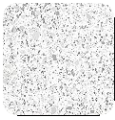
Color code: 225  
Style number: C2118



#### Dusty Trail

Color code: 250  
Style number: C2118

## Colorways



### Tephra

Color code: 727  
Style number: C2118



### Antique Finish

Color code: 870  
Style number: C2118



### Tinsmith

Color code: 925  
Style number: C2118



### Jack Rabbit

Color code: 940  
Style number: C2118



### Silverplate

Color code: 945  
Style number: C2118



### Dire Wolf

Color code: 960  
Style number: C2118



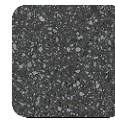
### Weathering

Color code: 961  
Style number: C2118



### Winterfell

Color code: 980  
Style number: C2118



### Valle De Bove

Color code: 989  
Style number: C2118



### Tumbled Finish

Color code: 615  
Style number: C2118



### Winter Mood

Color code: 910  
Style number: C2118

## Testing

Feature	Description
Classification	(ASTM F1700) Type B - Embossed
Squareness	(ASTM F 2421) ±0.10" max
Size and Tolerance	(ASTM F2421) Passes
Thickness	(ASTM F386) ±0.005"
Flexibility	(ASTM F137) Passes
Dimensional Stability	(ASTM F2199) Passes
Static Load Limit	(ASTM F970) 1000 psi
Residual Indentation	(ASTM F1914) Passes
Resistance to Chemicals	(ASTM F925) Passes
Resistance to Light	(ASTM F1515) Passes
Resistance to Heat	(ASTM F1514) Passes
Radiant Flux	(ASTM E648) Class 1
Smoke Density	(ASTM E662) =450
Wear Layer Thickness	20 mil (0.5 mm)
Lightfastness	(ASTM F1515) Passes

## Sustainability

---

Feature	Description
EPD	<a href="#">Flex 4.5 LVT EPD</a>
Country of Origin	USA

## Packaging

---

Feature	Description
Pieces per Carton	10
Weight per Piece (lbs)	3.3
Cartons Per Pallet	60
Square Feet per Carton	20.01
Weight per Carton (lbs)	33.2

## Warranties

---

Limited 20 Year M-Force Ultra Commercial Warranty