

TINTED TIMBER

Deep Tint C2136

7 in x 48 in LVT

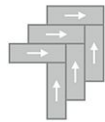


Collection	Tinted Timber
Style	Deep Tint (C2136)
Product Type	LVT
Size	7 in x 48 in
Construction	Commercial LVT
Total Thickness	2.5 mm
Wear Layer	20 mil (0.5 mm)
Finish	M-Force™ Ultra
Surface Profile	Embossed
Edge Profile	Squared
Installation	Glue Down
Recommended Adhesive	M95.0, M99, MS160, M700 Plus, or Total Bond Adhesive

Recommended Installation Methods



Brick Ashlar



Herringbone



Monolithic



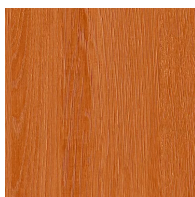
Random

Colorways



Golden Honey

Color: 132



Tangerine Beam

Color: 252



Charred Cherry

Color: 359



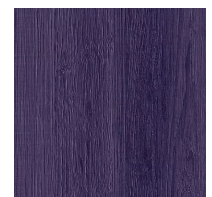
Red Flare

Color: 363



Lavender Drift

Color: 425



Violet Shade

Color: 484



Seafoam Haze
Color: 516



Frosted Sky
Color: 517



Harbor Blue
Color: 525



Ocean Indigo
Color: 565



Eucalyptus Veil
Color: 626



Citrus Leaf
Color: 631



Teal Tide
Color: 665



Deep Evergreen
Color: 686

Testing

Classification	(ASTM F1700) Type B - Embossed
Squareness	(ASTM F 2421) ±0.10" max
Size and Tolerance	(ASTM F2421) Passes
Thickness	(ASTM F386) ±0.005"
Flexibility	(ASTM F137) Passes
Dimensional Stability	(ASTM F2199) Passes
Static Load Limit	(ASTM F970) 1000 psi
Lightfastness	(ASTM F1515) Passes
Residual Indentation	(ASTM F1914) Passes
Resistance to Chemicals	(ASTM F925) Passes
Resistance to Light	(ASTM F1515) Passes
Resistance to Heat	(ASTM F1514) Passes
Radiant Flux	(ASTM E648) Class 1
Smoke Density	(ASTM E662) <450
Wear Layer Thickness	20 mil (0.5 mm)

Packaging

Square Feet Per Carton	42
Pieces Per Carton	18
Cartons Per Pallet	60

Warranties

[Limited 20 Year M-Force Ultra Commercial Warranty](#)