

TINTED TIMBER

Whisper Grain C2137

7 in x 48 in LVT

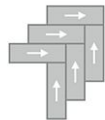


Collection	Tinted Timber
Style	Whisper Grain (C2137)
Product Type	LVT
Size	7 in x 48 in
Construction	Commercial LVT
Total Thickness	2.5 mm
Wear Layer	20 mil (0.5 mm)
Finish	M-Force™ Ultra
Surface Profile	Embossed
Edge Profile	Squared
Installation	Glue Down
Recommended Adhesive	M95.0, M99, MS160, M700 Plus, or Total Bond Adhesive

Recommended Installation Methods



Brick Ashlar



Herringbone



Monolithic



Random

Colorways



Meadow Grain
Color: 816



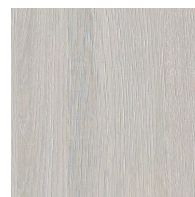
Sunflare Grain
Color: 822



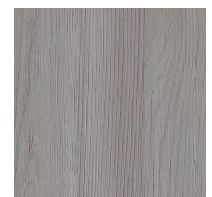
Lagoon Grain
Color: 826



Plum Grain
Color: 844



Glacier Grain
Color: 915



Ember Grain
Color: 943



Tide Grain

Color: 945

Testing

Classification	(ASTM F1700) Type B - Embossed
Squareness	(ASTM F 2421) ± 0.10 " max
Size and Tolerance	(ASTM F2421) Passes
Thickness	(ASTM F386) ± 0.005 "
Flexibility	(ASTM F137) Passes
Dimensional Stability	(ASTM F2199) Passes
Static Load Limit	(ASTM F970) 1000 psi
Lightfastness	(ASTM F1515) Passes
Residual Indentation	(ASTM F1914) Passes
Resistance to Chemicals	(ASTM F925) Passes
Resistance to Light	(ASTM F1515) Passes
Resistance to Heat	(ASTM F1514) Passes
Radiant Flux	(ASTM E648) Class 1
Smoke Density	(ASTM E662) <450
Wear Layer Thickness	20 mil (0.5 mm)
Light Reflectancy	47

Packaging

Square Feet Per Carton	42
Pieces Per Carton	18
Cartons Per Pallet	60

Warranties

[Limited 20 Year M-Force Ultra Commercial Warranty](#)