

**HOT AND HEAVY II**

Neutral Timber 2.5 C2138

7 in x 48 in LVT

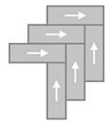


Collection	Hot and Heavy II
Style	Neutral Timber 2.5 (C2138)
Product Type	LVT
Size	7 in x 48 in
Construction	Commercial LVT
Total Thickness	2.5 mm
Wear Layer	20 mil (0.5 mm)
Finish	M-Force™ Ultra
Surface Profile	Embossed
Edge Profile	Squared
Installation	Glue Down
Recommended Adhesive	M95.0, MS160, M700 Plus, FlexPress, or Total Bond Adhesive

**Recommended Installation Methods**



Brick Ashlar



Herringbone



Monolithic

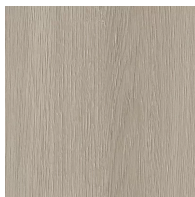


Random

**Colorways**



**Canvas Oak**  
Color: 811



**Harvest Oak**  
Color: 828



**Cocoa Oak**  
Color: 848



**Umber Oak**  
Color: 868



**Cloud Oak**  
Color: 917



**Smoked Oak**  
Color: 949



**Midnight Oak**

Color: 979

**Testing**

---

Classification	(ASTM F1700) Type B - Embossed
Squareness	(ASTM F 2421) $\pm 0.10$ " max
Size and Tolerance	(ASTM F2421) Passes
Thickness	(ASTM F386) $\pm 0.005$ "
Flexibility	(ASTM F137) Passes
Dimensional Stability	(ASTM F2199) Passes
Static Load Limit	(ASTM F970) 1000 psi
Lightfastness	(ASTM F1515) Passes
Residual Indentation	(ASTM F1914) Passes
Resistance to Chemicals	(ASTM F925) Passes
Resistance to Light	(ASTM F1515) Passes
Resistance to Heat	(ASTM F1514) Passes
Radiant Flux	(ASTM E648) Class 1
Smoke Density	(ASTM E662) <450
Wear Layer Thickness	20 mil (0.5 mm)
Light Reflectancy	45

**Sustainability**

---

Embodied Carbon	6.43 kg CO <sub>2</sub> e/m <sup>2</sup>
Carbon Handprint	-6.75 kg CO <sub>2</sub> e/m <sup>2</sup>
Beyond Carbon Neutral	-0.3215 kg CO <sub>2</sub> e/m <sup>2</sup>
Pre-Consumer Recycled Content	25%
EPD	Hot and Heavy II 2.5 mm EPD
HPD	Hot & Heavy II 2.5 mm HPD

## Packaging

---

Square Feet Per Carton	42
Pieces Per Carton	18
Cartons Per Pallet	60

## Warranties

---

[Limited 20 Year M-Force Ultra Commercial Warranty](#)