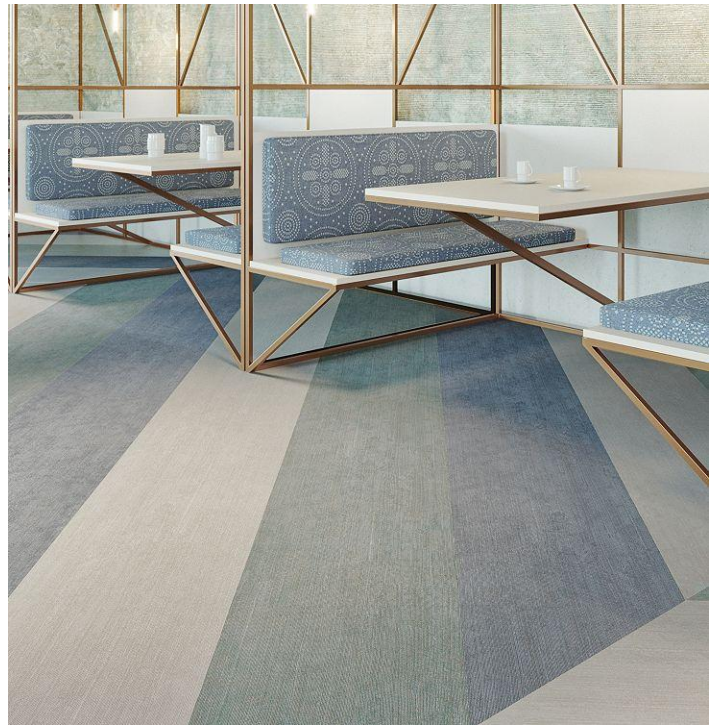


Hit The Mark

Overview

Feature	Description
Collection	Hit the Mark
Style	Hit The Mark (C0095)
Product Type	LVT
Size	7.25" X 48"
Construction	Commercial LVT
Gauge	3 mm
Total Thickness	3 mm
Wear Layer	30 mil (0.7 mm)
Finish	M-Force™ Ultra
Surface Profile	Embossed
Edge Profile	Squared
Installation	Glue Down
Installation Method	Brick Ashlar, Half Lap, Herringbone, Random
Recommended Adhesive	M95.0, M99, MS160, M700 Plus, or Total Bond Adhesive



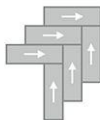
Recommended Installation Methods



Brick Ashlar



Half Lap



Herringbone



Random

Colorways



Make It

Color code: 241
Style number: C0095



Precise

Color code: 262
Style number: C0095



Prevail

Color code: 751
Style number: C0095



Target

Color code: 852
Style number: C0095



Exact

Color code: 862
Style number: C0095



Deliver

Color code: 937
Style number: C0095

Colorways



Focus

Color code: 941
Style number: C0095



Jackpot

Color code: 956
Style number: C0095



Score

Color code: 978
Style number: C0095



Aim

Color code: 979
Style number: C0095

Testing

Feature	Description
Classification	(ASTM F1700) Class III, Type B, Embossed
Squareness	(ASTM F2421) ±0.10 in
Size and Tolerance	(ASTM F2421) ±0.016 in
Thickness	(ASTM F386) ± .005 in
Flexibility	(ASTM F137) Passes
Dimensional Stability	(ASTM F2199) Passes
Static Load Limit	(ASTM F970) 1000 psi
Residual Indentation	(ASTM F1914) Passes
Resistance to Chemicals	(ASTM F925) Passes
Resistance to Light	(ASTM F1515) Passes
Resistance to Heat	(ASTM F1514) Passes
Radiant Flux	(ASTM E648) Class 1
Smoke Density	(ASTM E662) □ 450
Wear Layer Thickness	30 mil (0.7 mm)
Lightfastness	(ASTM F1515) Passes

Sustainability

Feature	Description
Embodied Carbon	11.9 kg CO2e/sq m2
Carbon Handprint	-12.5 kg CO2e/sq m2
Beyond Carbon Neutral	-0.595
EPD	EPD Vinyl Tile
Material Health	Free of Orthophthalates and Heavy Metals
LEED	Calculate LEED on Ecomedes
Mindful Materials	Participates in Mindful Materials Library
MindClick Rating	Achiever
Country of Origin	China

Packaging

Feature	Description
Pieces per Carton	16
Weight per Piece	2.66
Cartons Per Pallet	52
Square Feet per Carton	38.67
Weight per Carton	42.56

Warranties

Limited 20 Year M-Force Ultra Commercial Warranty