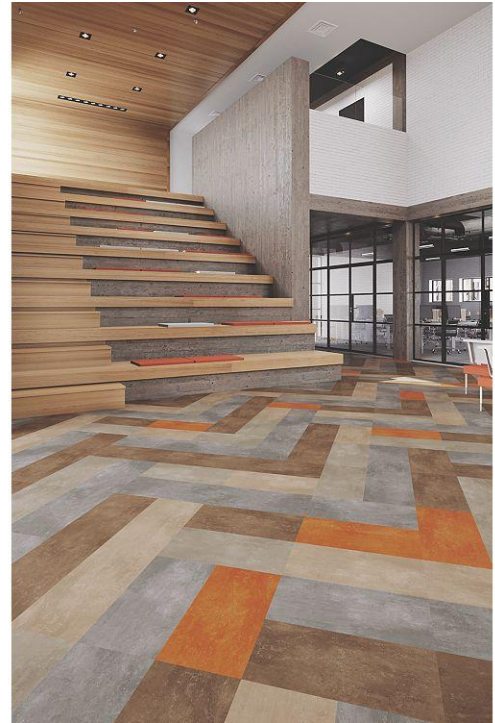


Matuto Plus Stone

Overview

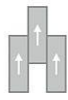
Feature	Description
Collection	Matuto Plus Stone
Style	Matuto Plus Stone (C0135)
Product Type	LVT
Size	12" X 24"
Construction	Commercial LVT
Gauge	2.5 mm
Total Thickness	2.5 mm
Wear Layer	20 mil (0.5 mm)
Finish	M-Force™ Ultra
Surface Profile	Embossed
Edge Profile	Squared
Installation	Glue Down
Installation Method	Brick Ashlar, Half Lap, Herringbone, Random
Recommended Adhesive	M95.0, M99, MS160, M700 Plus, or Total Bond Adhesive



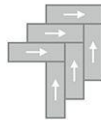
Recommended Installation Methods



Brick Ashlar



Half Lap



Herringbone



Random

Colorways



Barely Beige Stone

Color code: 123A
Style number: C0135



Lemon Twist Stone

Color code: 131A
Style number: C0135



Outrageous Orange St

Color code: 252A
Style number: C0135



Red Hot Stone

Color code: 353A
Style number: C0135



Wizard Stone

Color code: 454A
Style number: C0135



Blue Night Stone

Color code: 555A
Style number: C0135

Colorways



Mega Blue Stone

Color code: 556A
Style number: C0135



Deep Sea Stone

Color code: 599A
Style number: C0135



Green Grass Stone

Color code: 646A
Style number: C0135



Botany Stone

Color code: 656A
Style number: C0135



Nutshell Stone

Color code: 752A
Style number: C0135



Bronze Blast Stone

Color code: 858A
Style number: C0135



Frostbite Stone

Color code: 915A
Style number: C0135



Agreeable Grey Stone

Color code: 926A
Style number: C0135



Sonic Silver Stone

Color code: 927A
Style number: C0135



Grey Granite Stone

Color code: 959A
Style number: C0135

Testing

Feature	Description
Classification	(ASTM F1700) Class III, Type B, Embossed
Squareness	(ASTM F2421) ±0.10 in
Size and Tolerance	(ASTM F2421) ±0.016 in
Thickness	(ASTM F386) ± .005 in
Flexibility	(ASTM F137) Passes
Dimensional Stability	(ASTM F2199) Passes
Static Load Limit	(ASTM F970) 1500 psi
Residual Indentation	(ASTM F1914) Passes
Resistance to Chemicals	(ASTM F925) Passes
Resistance to Light	(ASTM F1515) Passes
Resistance to Heat	(ASTM F1514) Passes
Radiant Flux	(ASTM E648) Class 1
Smoke Density	(ASTM E662) ≤ 450
Wear Layer Thickness	20 mil (0.5 mm)
Lightfastness	(ASTM F1515) Passes

Sustainability

Feature	Description
Embodied Carbon	11.9 kg CO2e/sq m2
Carbon Handprint	-12.5 kg CO2e/sq m2
Beyond Carbon Neutral	-0.595
EPD	EPD Vinyl Tile
Material Health	Free of Orthophthalates and Heavy Metals
LEED	Calculate LEED on Ecomedes
Mindful Materials	Participates in Mindful Materials Library
MindClick Rating	Achiever
Country of Origin	South Korea

Packaging

Feature	Description
Pieces per Carton	18
Weight per Piece	1.72
Cartons Per Pallet	60
Square Feet per Carton	36
Weight per Carton	30.96

Warranties

Limited 20 Year M-Force Ultra Commercial Warranty