

Molveno Woods

Overview

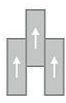
Feature	Description
Collection	Molveno
Style	Molveno Woods (C0110)
Product Type	LVT
Size	7.75" X 59.75"
Construction	Rigid LVT
Gauge	6 mm
Total Thickness	6 mm
Wear Layer	20 mil (0.5 mm)
Finish	M-Force™
Surface Profile	Embossed In Register
Edge Profile	Micro-Beveled
Installation	Click
Installation Method	Brick Ashlar, Half Lap, Random
Recommended Adhesive	None Required



Recommended Installation Methods



Brick Ashlar



Half Lap



Random

Colorways



Argos

Color code: 105
Style number: C0110



Touch Of Sand

Color code: 121
Style number: C0110



Iced Mocha

Color code: 817
Style number: C0110



Toasty

Color code: 855
Style number: C0110



Warmstone

Color code: 858
Style number: C0110



Jute Brown

Color code: 872
Style number: C0110

Colorways



Tin Lizzie

Color code: 905
Style number: C0110



Caraibe

Color code: 982
Style number: C0110



Grounded

Color code: 983
Style number: C0110



Ginger Root

Color code: 992
Style number: C0110

Testing

Feature	Description
Classification	(ASTM F1700) Class III, Type B, Embossed
Squareness	(ASTM F2421) ±0.10 in
Size and Tolerance	(ASTM F2421) ±0.016 in
Thickness	(ASTM F386) ± .005 in
Flexibility	(ASTM F137) Passes
Dimensional Stability	(ASTM F2199) Passes
Static Load Limit	(ASTM F970) 1500 psi
Residual Indentation	(ASTM F1914) Passes
Resistance to Chemicals	(ASTM F925) Passes
Resistance to Light	(ASTM F1515) Passes
Resistance to Heat	(ASTM F1514) Passes
Radiant Flux	(ASTM E648) Class 1
Smoke Density	(ASTM E662) ≤ 450
Wear Layer Thickness	20 mil (0.5 mm)
Lightfastness	(ASTM F1515) Passes

Sustainability

Feature	Description
Embodied Carbon	11.9 kg CO2e/sq m2
Carbon Handprint	-12.5 kg CO2e/sq m2
Beyond Carbon Neutral	-0.595
EPD	EPD Vinyl Tile
Material Health	Free of Orthophthalates and Heavy Metals
LEED	Calculate LEED on Ecomedes
Mindful Materials	Participates in Mindful Materials Library
MindClick Rating	Achiever
Country of Origin	China

Packaging

Feature	Description
Pieces per Carton	6
Weight per Piece	6.63
Cartons Per Pallet	68
Square Feet per Carton	19.29
Weight per Carton	39.78

Warranties

Limited 15 Year M-Force Commercial Warranty