

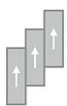
Pattern of Time

Overview

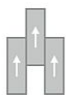
Feature	Description
Collection	Large and Local
Style	Pattern of Time (64033)
Product Type	LVT
Size	9.25 in X 59 in
Construction	Commercial LVT
Gauge	4.5 mm
Total Thickness	4.5 mm
Wear Layer	20 mil (0.5mm)
Finish	M-Force™ Ultra
Surface Profile	Overall Emboss
Edge Profile	Micro-Beveled
Installation	Glue Down
Installation Method	Brick Ashlar, Half Lap, Herringbone, Random
Recommended Adhesive	M95.0, M99, M700 Plus, or Total Bond Adhesive



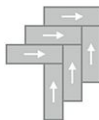
Recommended Installation Methods



Brick Ashlar



Half Lap



Herringbone



Random

Colorways



Saxe Essence

Color code: 575
Style number: 64033



Saxe Soul

Color code: 585
Style number: 64033



Viridescent

Color code: 678
Style number: 64033



Dominican Amber

Color code: 828
Style number: 64033



Gilded

Color code: 858
Style number: 64033



Whisper

Color code: 925
Style number: 64033

Colorways



Sun Amber

Color code: 928
Style number: 64033



Silver Lining

Color code: 969
Style number: 64033

Testing

Feature	Description
Classification	(ASTM F1700) Class III, Type B - Embossed
Squareness	(ASTM F2421) Passes
Size and Tolerance	(ASTM F2055) Passes
Thickness	(ASTM F386) Passes
Flexibility	(ASTM F137) Passes
Dimensional Stability	(ASTM F2199) Passes
Static Load Limit	(ASTM F970) 1000 psi
Residual Indentation	(ASTM F1914) Passes
Resistance to Chemicals	(ASTM F925) Passes - No more than a slight change
Resistance to Light	(ASTM F1515) Passes -E <8
Resistance to Heat	(ASTM F1514) Passes
Radiant Flux	(ASTM E648) Class 1 (>0.45 W/cm2)
Smoke Density	(ASTM E-662) 450
Wear Layer Thickness	20 mil (0.5mm)
Lightfastness	(ASTM F1515) Passes -E <8

Sustainability

Feature	Description
Embodied Carbon	11.9 kg CO2e/sq m2
Carbon Handprint	-12.5 kg CO2e/sq m2
Beyond Carbon Neutral	-0.595
Specify for a Cure	Eligible

Packaging

Feature	Description
Pieces per Carton	7
Weight per Piece	6.3999999999999995
Cartons Per Pallet	44
Square Feet per Carton	26.52
Weight per Carton	44.8