

Premium Wood

Overview

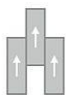
| Feature | Description |
|----------------------|--|
| Collection | Living Local |
| Style | Premium Wood (C0194) |
| Product Type | LVT |
| Size | 7.72" X 51.97" |
| Construction | Commercial LVT |
| Gauge | 2.5 mm |
| Total Thickness | 2.5 mm |
| Wear Layer | 20 mil (0.5 mm) |
| Finish | M-Force™ Ultra |
| Surface Profile | Embossed |
| Edge Profile | Micro-beveled |
| Installation | Glue Down |
| Installation Method | Brick Ashlar, Half Lap, Herringbone, Random |
| Recommended Adhesive | M95.0, M99, MS160, M700 Plus, or Total Bond Adhesive |



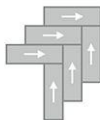
Recommended Installation Methods



Brick Ashlar



Half Lap



Herringbone



Random

Colorways



Cedar

Color code: 332
Style number: C0194



Western Woods

Color code: 123
Style number: C0194



Cocoa

Color code: 889
Style number: C0194



Brick

Color code: 358
Style number: C0194



Shadow

Color code: 096
Style number: C0194



Beagle

Color code: 838
Style number: C0194

Colorways



Tan Tone

Color code: 812
Style number: C0194



Sandy

Color code: 829
Style number: C0194



Silver

Color code: 918
Style number: C0194



Two Tone

Color code: 958
Style number: C0194



Gorgeous Gray

Color code: 949
Style number: C0194



Lead

Color code: 989
Style number: C0194



Fawn

Color code: 210
Style number: C0194



Bay Leaf

Color code: 939
Style number: C0194



Studio

Color code: 095
Style number: C0194



Almond

Color code: 330
Style number: C0194



Bisque Ware

Color code: 560
Style number: C0194



Scone

Color code: 235
Style number: C0194

Testing

| Feature | Description |
|-------------------------|--|
| Classification | (ASTM F1700) Class III, Type B, Embossed |
| Squareness | (ASTM F2421) ±0.10 in |
| Size and Tolerance | (ASTM F2421) ±0.016 in |
| Thickness | (ASTM F386) ± .005 in |
| Flexibility | (ASTM F137) Passes |
| Dimensional Stability | (ASTM F2199) Passes |
| Static Load Limit | (ASTM F970) 1000 psi |
| Residual Indentation | (ASTM F1914) Passes |
| Resistance to Chemicals | (ASTM F925) Passes |
| Resistance to Light | (ASTM F1515) Passes |
| Resistance to Heat | (ASTM F1514) Passes |
| Radiant Flux | (ASTM E648) Class 1 |
| Smoke Density | (ASTM E662) ≤ 450 |
| Wear Layer Thickness | 20 mil (0.5 mm) |
| Lightfastness | (ASTM F1515) Passes |

Sustainability

| Feature | Description |
|-------------------------------|--|
| Embodied Carbon | 6.41 kg CO2e/sq m2 |
| Carbon Handprint | -6.73 kg CO2e/sq m2 |
| Beyond Carbon Neutral | -0.321 |
| Pre-Consumer Recycled Content | 100% |
| EPD | Flex 2.5 LVT EPD |
| Material Health | Free of Orthophthalates and Heavy Metals |
| LEED | Calculate LEED on Ecomedes |
| MindClick Rating | Achiever |
| Country of Origin | USA |

Packaging

| Feature | Description |
|------------------------|--------------------|
| Pieces per Carton | 13 |
| Weight per Piece | 2.3400000000000003 |
| Cartons Per Pallet | 60 |
| Square Feet per Carton | 36.22 |
| Weight per Carton | 30.42 |

Warranties

Limited 20 Year M-Force Ultra Commercial Warranty