

# Reforestation

## Overview

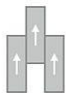
Feature	Description
Collection	Large and Local
Style	Reforestation (C0188)
Product Type	LVT
Size	9.25" X 59"
Construction	Commercial LVT
Gauge	4.5 mm
Total Thickness	4.5 mm
Wear Layer	20 mil (0.5 mm)
Finish	M-Force™ Ultra
Surface Profile	Embossed
Edge Profile	Micro-beveled
Installation	Glue Down
Installation Method	Brick Ashlar, Half Lap, Herringbone, Random
Recommended Adhesive	M95.0, M99, MS160, M700 Plus, or Total Bond Adhesive



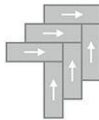
## Recommended Installation Methods



Brick Ashlar



Half Lap



Herringbone



Random

## Colorways



### Bridal Veil

Color code: 220  
Style number: C0188



### Waterwheel

Color code: 225  
Style number: C0188



### Cumberland

Color code: 838  
Style number: C0188



### Burney

Color code: 839  
Style number: C0188



### Ruby

Color code: 858  
Style number: C0188



### Marion

Color code: 862  
Style number: C0188

## Colorways



### Yosemite

Color code: 868  
Style number: C0188



### Turner

Color code: 889  
Style number: C0188



### Racehorse

Color code: 939  
Style number: C0188



### Shannon

Color code: 949  
Style number: C0188



### Alberta

Color code: 979  
Style number: C0188

## Testing

Feature	Description
Classification	(ASTM F1700) Class III, Type B, Embossed
Squareness	(ASTM F2421) ±0.10 in
Size and Tolerance	(ASTM F2421) ±0.016 in
Thickness	(ASTM F386) ± .005 in
Flexibility	(ASTM F137) Passes
Dimensional Stability	(ASTM F2199) Passes
Static Load Limit	(ASTM F970) 1000 psi
Residual Indentation	(ASTM F1914) Passes
Resistance to Chemicals	(ASTM F925) Passes
Resistance to Light	(ASTM F1515) Passes
Resistance to Heat	(ASTM F1514) Passes
Radiant Flux	(ASTM E648) Class 1
Smoke Density	(ASTM E662) □ 450
Wear Layer Thickness	20 mil (0.5 mm)
Lightfastness	(ASTM F1515) Passes

## Sustainability

Feature	Description
Embodied Carbon	6.65 kg CO2e/sq m2
Carbon Handprint	-6.98 kg CO2e/sq m2
Beyond Carbon Neutral	-0.333
Pre-Consumer Recycled Content	100%
EPD	Flex 4.5 LVT EPD
Material Health	Free of Orthophthalates and Heavy Metals
LEED	<a href="#">Calculate LEED on Ecomedes</a>
The Waterways Project	Eligible
MindClick Rating	Achiever
Country of Origin	USA

## Packaging

---

Feature	Description
Pieces per Carton	7
Weight per Piece	6.3999999999999995
Cartons Per Pallet	44
Square Feet per Carton	26.52
Weight per Carton	44.8

## Warranties

---

Limited 20-Year M-Force Ultra Commercial Warranty