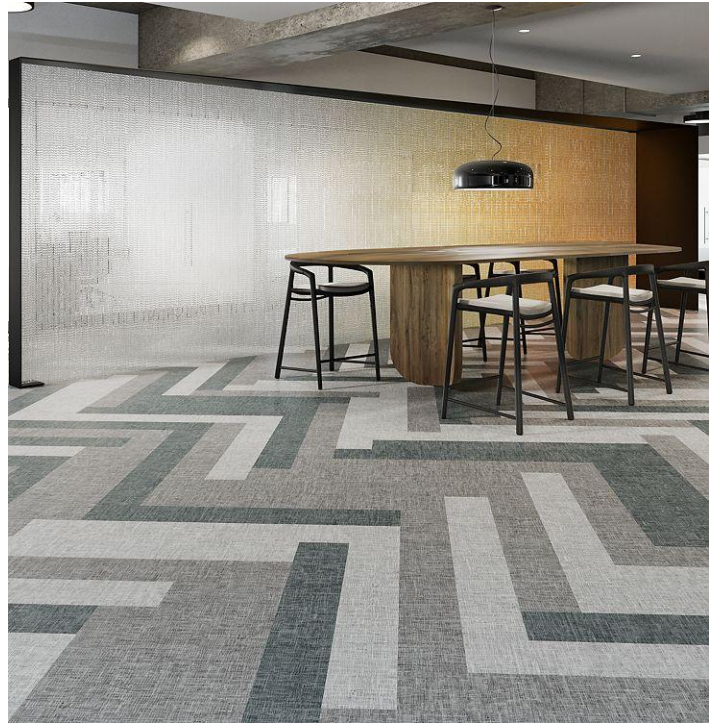


# Rendered Flax

## Overview

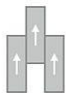
Feature	Description
Collection	Large and Local
Style	Rendered Flax (C0192)
Product Type	LVT
Size	6" X 48"
Construction	Commercial LVT
Gauge	4.5 mm
Total Thickness	4.5 mm
Wear Layer	20 mil (0.5 mm)
Finish	M-Force™ Ultra
Surface Profile	Embossed
Edge Profile	Micro-beveled
Installation	Glue Down
Installation Method	Brick Ashlar, Half Lap, Herringbone, Random
Recommended Adhesive	M95.0, M99, MS160, M700 Plus, or Total Bond Adhesive



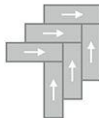
## Recommended Installation Methods



Brick Ashlar



Half Lap



Herringbone



Random

## Colorways



### Coir Gray

Color code: 992  
Style number: C0192



### Hemlock

Color code: 415  
Style number: C0192



### Wild Indigo

Color code: 698  
Style number: C0192



### Crisp

Color code: 127  
Style number: C0192



### Walnut Husk

Color code: 848  
Style number: C0192



### Madder Root

Color code: 847  
Style number: C0192

## Colorways



### Buckthorn

Color code: 812  
Style number: C0192



### Intrepid

Color code: 928  
Style number: C0192



### Boreal

Color code: 95  
Style number: C0192



### Dusk

Color code: 655  
Style number: C0192



### Beach Grass

Color code: 128  
Style number: C0192



### Snowbank

Color code: 919  
Style number: C0192



### Mist

Color code: 961  
Style number: C0192



### Mountain Ash

Color code: 938  
Style number: C0192



### Ice

Color code: 918  
Style number: C0192

## Testing

Feature	Description
Classification	(ASTM F1700) Class III, Type B, Embossed
Squareness	(ASTM F2421) ±0.10 in
Size and Tolerance	(ASTM F2421) ±0.016 in
Thickness	(ASTM F386) ± .005 in
Flexibility	(ASTM F137) Passes
Dimensional Stability	(ASTM F2199) Passes
Static Load Limit	(ASTM F970) 1000 psi
Residual Indentation	(ASTM F1914) Passes
Resistance to Chemicals	(ASTM F925) Passes
Resistance to Light	(ASTM F1515) Passes
Resistance to Heat	(ASTM F1514) Passes
Radiant Flux	(ASTM E648) Class 1
Smoke Density	(ASTM E662) ≤ 450
Wear Layer Thickness	20 mil (0.5 mm)
Lightfastness	(ASTM F1515) Passes

## Sustainability

Feature	Description
Embodied Carbon	6.65 kg CO2e/sq m2
Carbon Handprint	-6.98 kg CO2e/sq m2
Beyond Carbon Neutral	-0.333
Pre-Consumer Recycled Content	100%
EPD	Flex 4.5 LVT EPD
Material Health	Free of Orthophthalates and Heavy Metals
LEED	<a href="#">Calculate LEED on Ecomedes</a>
MindClick Rating	Achiever
Country of Origin	USA

## Packaging

Feature	Description
Pieces per Carton	10
Weight per Piece	3.41
Cartons Per Pallet	60
Square Feet per Carton	20
Weight per Carton	34.1

## Warranties

Limited 20-Year M-Force Ultra Commercial Warranty