

## Second Home Studio

### Overview

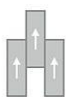
Feature	Description
Collection	Second Home
Style	Second Home Studio (C2071)
Product Type	LVT
Size	7.46" X 47.80"
Construction	Rigid LVT
Gauge	5 mm
Total Thickness	5 mm
Wear Layer	20 mil (0.5 mm)
Finish	M-Force™ Ultra
Surface Profile	Embossed
Edge Profile	Painted Bevel
Installation	Click
Installation Method	Brick Ashlar, Half Lap, Random
Recommended Adhesive	None Required
Core Type	Solid Polymer Core (SPC)



### Recommended Installation Methods



Brick Ashlar



Half Lap



Random

### Colorways



#### Bone

Color code: 817  
Style number: C2071



#### Burlap

Color code: 822  
Style number: C2071



#### Muslin

Color code: 831  
Style number: C2071



#### Wheat

Color code: 838  
Style number: C2071



#### Fawn

Color code: 848  
Style number: C2071



#### Bark

Color code: 879  
Style number: C2071

## Colorways



### Putty

Color code: 939  
Style number: C2071



### Driftwood

Color code: 948  
Style number: C2071

## Testing

Feature	Description
Classification	(ASTM F1700) Class III, Type B, Embossed
Squareness	(ASTM F2421) $\pm 0.10$ in
Size and Tolerance	(ASTM F2421) $\pm 0.016$ in
Thickness	(ASTM F386) $\pm .005$ in
Flexibility	(ASTM F137) Passes
Dimensional Stability	(ASTM F2199) Passes
Static Load Limit	(ASTM F970) 1000 psi
Residual Indentation	(ASTM F1914) Passes
Resistance to Chemicals	(ASTM F925) Passes
Resistance to Light	(ASTM F1515) Passes
Resistance to Heat	(ASTM F1514) Passes
Radiant Flux	(ASTM E648) Class 1
Smoke Density	(ASTM E662) $\leq 450$
Wear Layer Thickness	20 mil (0.5 mm)
Lightfastness	(ASTM F1515) Passes

## Sustainability

Feature	Description
Embodied Carbon	6.68 kg CO <sub>2</sub> e/sq m <sup>2</sup>
Carbon Handprint	-7.01 kg CO <sub>2</sub> e/sq m <sup>2</sup>
Beyond Carbon Neutral	-0.321
EPD	EPD Vinyl Tile
Material Health	Free of Orthophthalates and Heavy Metals
Mindful Materials	Participates in Mindful Materials Library
MindClick Rating	Achiever
Country of Origin	USA

## Packaging

---

Feature	Description
Pieces per Carton	12
Weight per Piece	4.07
Cartons Per Pallet	50
Square Feet per Carton	29.72
Weight per Carton	48.84

## Warranties

---

Limited 20 Year M-Force Ultra Commercial Warranty