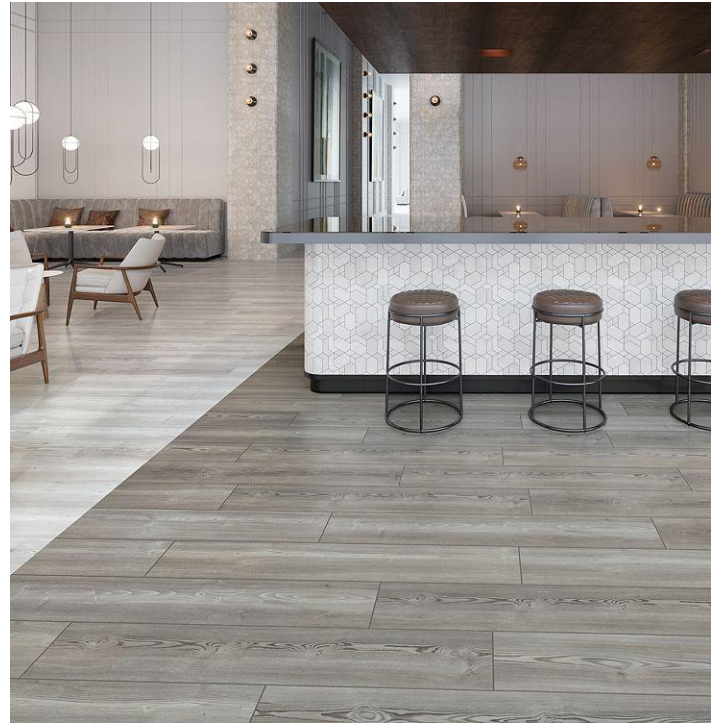


## Second Home Wood

### Overview

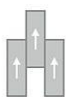
Feature	Description
Collection	Second Home
Style	Second Home Wood (C0141)
Product Type	LVT
Size	7.5" X 48"
Construction	Rigid LVT
Gauge	6 mm
Total Thickness	6 mm
Wear Layer	20 mil (0.5 mm)
Finish	M-Force™ Ultra
Surface Profile	Embossed
Edge Profile	Painted Bevel
Installation	Click
Installation Method	Brick Ashlar, Half Lap, Random
Recommended Adhesive	None Required
Core Type	Solid Polymer Core (SPC)



### Recommended Installation Methods



Brick Ashlar



Half Lap



Random

### Colorways



#### Bagel Beige

Color code: 821  
Style number: C0141



#### Rideshare Beige

Color code: 837  
Style number: C0141



#### Balanced Beige

Color code: 838  
Style number: C0141



#### Backpack Brown

Color code: 842  
Style number: C0141



#### Coffee Line Tan

Color code: 847  
Style number: C0141



#### Sidewalk Gray

Color code: 849  
Style number: C0141

## Colorways



### Cafe Taupe

Color code: 859  
Style number: C0141



### Iced Mocha Brown

Color code: 865  
Style number: C0141



### Taxi Queue Brown

Color code: 875  
Style number: C0141



### Wingtip Brown

Color code: 878  
Style number: C0141



### Continental Breakfas

Color code: 885  
Style number: C0141



### Ballroom Gray

Color code: 921  
Style number: C0141



### Getaway Gray

Color code: 925  
Style number: C0141



### Elevator Gray

Color code: 941  
Style number: C0141



### Meeting Place Greige

Color code: 948  
Style number: C0141

## Testing

Feature	Description
Classification	(ASTM F1700) Class III, Type B, Embossed
Squareness	(ASTM F2421) ±0.10 in
Size and Tolerance	(ASTM F2421) ±0.016 in
Thickness	(ASTM F386) ± .005 in
Flexibility	(ASTM F137) Passes
Dimensional Stability	(ASTM F2199) Passes
Static Load Limit	(ASTM F970) 1000 psi
Residual Indentation	(ASTM F1914) Passes
Resistance to Chemicals	(ASTM F925) Passes
Resistance to Light	(ASTM F1515) Passes
Resistance to Heat	(ASTM F1514) Passes
Radiant Flux	(ASTM E648) Class 1
Smoke Density	(ASTM E662) ≤ 450
Wear Layer Thickness	20 mil (0.5 mm)
Lightfastness	(ASTM F1515) Passes

## Sustainability

Feature	Description
Embodied Carbon	6.68 kg CO2e/sq m2
Carbon Handprint	-7.01 kg CO2e/sq m2
Beyond Carbon Neutral	-0.321
Pre-Consumer Recycled Content	100%
EPD	Rigid Core EPD
Material Health	Free of Orthophthalates and Heavy Metals
LEED	<a href="#">Calculate LEED on Ecomedes</a>
Specify for a Cure	Eligible
Mindful Materials	Participates in Mindful Materials Library
MindClick Rating	Achiever
Country of Origin	USA

## Packaging

Feature	Description
Pieces per Carton	7
Weight per Piece	4.55
Cartons Per Pallet	50
Square Feet per Carton	17.32
Weight per Carton	31.85

## Warranties

Limited 20 Year M-Force Ultra Commercial Warranty