

Secoya

Overview

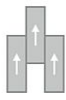
Feature	Description
Collection	Hot and Heavy
Style	Secoya (C0009)
Product Type	LVT
Size	9" X 59"
Construction	Commercial LVT
Gauge	5 mm
Total Thickness	5 mm
Wear Layer	20 mil (0.5 mm)
Finish	M-Force™ Ultra
Surface Profile	Embossed
Edge Profile	Micro-Beveled
Installation	Glue Down, Loose Lay
Installation Method	Brick Ashlar, Half Lap, Herringbone, Random
Recommended Adhesive	M95.0, M99, MS160, M700 Plus, or Total Bond Adhesive



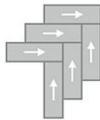
Recommended Installation Methods



Brick Ashlar



Half Lap



Herringbone



Random

Colorways



Benmore

Color code: 123
Style number: C0009



Kew Gardens

Color code: 142
Style number: C0009



Atwell Mill

Color code: 148
Style number: C0009



Arrowhead Creek

Color code: 152
Style number: C0009



Redwood

Color code: 333
Style number: C0009



Sierra

Color code: 352
Style number: C0009

Colorways



Oakbark

Color code: 833
Style number: C0009



Picton Park

Color code: 872
Style number: C0009



Woodland

Color code: 878
Style number: C0009



Converse Basin

Color code: 936
Style number: C0009



Alder Creek

Color code: 945
Style number: C0009



Open Canyon

Color code: 946
Style number: C0009



Calaveras

Color code: 989
Style number: C0009

Testing

Feature	Description
Classification	(ASTM F1700) Class III, Type B, Embossed
Squareness	(ASTM F2421) ±0.10 in
Size and Tolerance	(ASTM F2421) ±0.016 in
Thickness	(ASTM F386) ± .005 in
Flexibility	(ASTM F137) Passes
Dimensional Stability	(ASTM F2199) Passes
Static Load Limit	(ASTM F970) 1000 psi
Residual Indentation	(ASTM F1914) Passes
Resistance to Chemicals	(ASTM F925) Passes
Resistance to Light	(ASTM F1515) Passes
Resistance to Heat	(ASTM F1514) Passes
Radiant Flux	(ASTM E648) Class 1
Smoke Density	(ASTM E662) 450
Wear Layer Thickness	20 mil (0.5 mm)
Lightfastness	(ASTM F1515) Passes

Sustainability

Feature	Description
Embodied Carbon	11.9 kg CO2e/sq m2
Carbon Handprint	-12.5 kg CO2e/sq m2
Beyond Carbon Neutral	-0.595
EPD	EPD Vinyl Tile
Material Health	Free of Orthophthalates and Heavy Metals
LEED	Calculate LEED on Ecomedes
Mindful Materials	Participates in Mindful Materials Library
MindClick Rating	Achiever
Country of Origin	South Korea

Packaging

Feature	Description
Pieces per Carton	6
Weight per Piece	6.46
Cartons Per Pallet	64
Square Feet per Carton	22.84
Weight per Carton	38.76

Warranties

Limited 20 Year M-Force Ultra Commercial Warranty