

# Stonework

## Overview

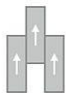
Feature	Description
Collection	Living Local
Style	Stonework (C0179)
Product Type	LVT
Size	12" X 24"
Construction	Commercial LVT
Gauge	2.5 mm
Total Thickness	2.5 mm
Wear Layer	20 mil (0.5 mm)
Finish	M-Force™ Ultra
Surface Profile	Embossed
Edge Profile	Micro-beveled
Installation	Glue Down
Installation Method	Brick Ashlar, Half Lap, Herringbone, Random
Recommended Adhesive	M95.0, M99, MS160, M700 Plus, or Total Bond Adhesive



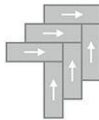
## Recommended Installation Methods



Brick Ashlar



Half Lap



Herringbone



Random

## Colorways



### Chiseled Edge

Color code: 225  
Style number: C0179



### Tumbled Finish

Color code: 615  
Style number: C0179



### Tinsmith

Color code: 925  
Style number: C0179



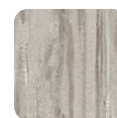
### Roman Column

Color code: 909  
Style number: C0179



### Fleuri

Color code: 920  
Style number: C0179



### Accessible Beige

Color code: 260  
Style number: C0179

## Colorways



### Warm Stone

Color code: 845  
Style number: C0179



### Antique Finish

Color code: 870  
Style number: C0179



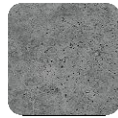
### Patina

Color code: 940  
Style number: C0179



### Silverplate

Color code: 945  
Style number: C0179



### Igneous

Color code: 950  
Style number: C0179



### Metamorphic

Color code: 250  
Style number: C0179



### Weathering

Color code: 960  
Style number: C0179



### Stamped Concrete

Color code: 985  
Style number: C0179

## Testing

Feature	Description
Classification	(ASTM F1700) Class III, Type B, Embossed
Squareness	(ASTM F2421) ±0.10 in
Size and Tolerance	(ASTM F2421) ±0.016 in
Thickness	(ASTM F386) ± .005 in
Flexibility	(ASTM F137) Passes
Dimensional Stability	(ASTM F2199) Passes
Static Load Limit	(ASTM F970) 1000 psi
Residual Indentation	(ASTM F1914) Passes
Resistance to Chemicals	(ASTM F925) Passes
Resistance to Light	(ASTM F1515) Passes
Resistance to Heat	(ASTM F1514) Passes
Radiant Flux	(ASTM E648) Class 1
Smoke Density	(ASTM E662) □ 450
Wear Layer Thickness	20 mil (0.5 mm)
Lightfastness	(ASTM F1515) Passes

## Sustainability

Feature	Description
Embodied Carbon	6.41 kg CO2e/sq m2
Carbon Handprint	-6.73 kg CO2e/sq m2
Beyond Carbon Neutral	-0.321
Pre-Consumer Recycled Content	100%
EPD	Flex 2.5 LVT EPD
Material Health	Free of Orthophthalates and Heavy Metals
LEED	<a href="#">Calculate LEED on Ecomedes</a>
Mindful Materials	Participates in Mindful Materials Library
MindClick Rating	Achiever
Country of Origin	USA

## Packaging

Feature	Description
Pieces per Carton	18
Weight per Piece	1.9400000000000002
Cartons Per Pallet	60
Square Feet per Carton	36
Weight per Carton	34.92

## Warranties

Limited 20 Year M-Force Ultra Commercial Warranty