

# Terrazzo

## Overview

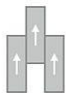
Feature	Description
Collection	Living Local
Style	Terrazzo (C0180)
Product Type	LVT
Size	12" X 24"
Construction	Commercial LVT
Gauge	2.5 mm
Total Thickness	2.5 mm
Wear Layer	20 mil (0.5 mm)
Finish	M-Force™ Ultra
Surface Profile	Embossed
Edge Profile	Micro-Beveled
Installation	Glue Down
Installation Method	Brick Ashlar, Half Lap, Herringbone, Random
Recommended Adhesive	M95.0, M99, MS160, M700 Plus, or Total Bond Adhesive



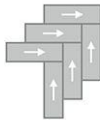
## Recommended Installation Methods



Brick Ashlar



Half Lap

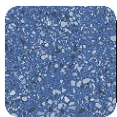


Herringbone



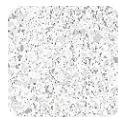
Random

## Colorways



### Mascali

Color code: 585  
Style number: C0180



### Tephra

Color code: 727  
Style number: C0180



### Valle De Bove

Color code: 989  
Style number: C0180



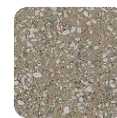
### Mongibello

Color code: 848  
Style number: C0180



### Linosa

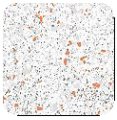
Color code: 939  
Style number: C0180



### Catania

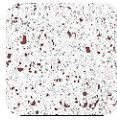
Color code: 826  
Style number: C0180

## Colorways



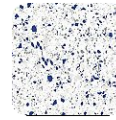
### Mercato

Color code: 722  
Style number: C0180



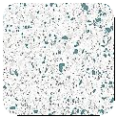
### Vesuvius

Color code: 723  
Style number: C0180



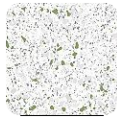
### Randazzo

Color code: 725  
Style number: C0180



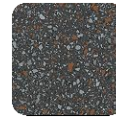
### Messina

Color code: 726  
Style number: C0180



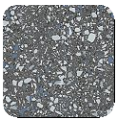
### Strabe

Color code: 736  
Style number: C0180



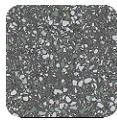
### Basal

Color code: 982  
Style number: C0180



### Somma

Color code: 985  
Style number: C0180



### Lahar

Color code: 986  
Style number: C0180

## Testing

Feature	Description
Classification	(ASTM F1700) Class III, Type B, Embossed
Squareness	(ASTM F2421) $\pm 0.10$ in
Size and Tolerance	(ASTM F2421) $\pm 0.016$ in
Thickness	(ASTM F386) $\pm .005$ in
Flexibility	(ASTM F137) Passes
Dimensional Stability	(ASTM F2199) Passes
Static Load Limit	(ASTM F970) 1000 psi
Residual Indentation	(ASTM F1914) Passes
Resistance to Chemicals	(ASTM F925) Passes
Resistance to Light	(ASTM F1515) Passes
Resistance to Heat	(ASTM F1514) Passes
Radiant Flux	(ASTM E648) Class 1
Smoke Density	(ASTM E662) $\leq 450$
Wear Layer Thickness	20 mil (0.5 mm)
Lightfastness	(ASTM F1515) Passes

## Sustainability

Feature	Description
Embodied Carbon	6.41 kg CO2e/sq m2
Carbon Handprint	-6.73 kg CO2e/sq m2
Beyond Carbon Neutral	-0.321
Pre-Consumer Recycled Content	100%
EPD	Flex 2.5 LVT EPD
Material Health	Free of Orthophthalates and Heavy Metals
LEED	<a href="#">Calculate LEED on Ecomedes</a>
MindClick Rating	Achiever
Country of Origin	USA

## Packaging

Feature	Description
Pieces per Carton	18
Weight per Piece	1.7000000000000002
Cartons Per Pallet	60
Square Feet per Carton	36
Weight per Carton	30.6

## Warranties

Limited 20 Year M-Force Ultra Commercial Warranty