

Vivid Step Wood

Overview

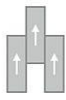
Feature	Description
Collection	Vivid Step
Style	Vivid Step Wood (CR705)
Product Type	LVT
Size	6" X 48"
Construction	Light Commercial LVT
Gauge	2 mm
Total Thickness	2 mm
Wear Layer	12 mil (0.3 mm)
Finish	Enhanced Urethane
Surface Profile	Embossed
Edge Profile	Micro-Beveled
Installation	Glue Down
Installation Method	Brick Ashlar, Half Lap, Herringbone, Random
Recommended Adhesive	M95.0, M99, MS160, M700 Plus, or Total Bond Adhesive



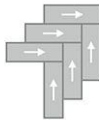
Recommended Installation Methods



Brick Ashlar



Half Lap



Herringbone



Random

Colorways



Shimmering Sand

Color code: W128
Style number: CR705



Grounded Hatch

Color code: W132
Style number: CR705



Golden Pine

Color code: W236
Style number: CR705



Candied Pecan

Color code: W719
Style number: CR705



Vintage Oak

Color code: W723
Style number: CR705



Beary Brown

Color code: W746
Style number: CR705

Colorways



Sable Birch

Color code: W754
Style number: CR705



Roasted Kaffee

Color code: W863
Style number: CR705



Java Hut

Color code: W898
Style number: CR705



Turkish Blend

Color code: W959
Style number: CR705



Deep Gris

Color code: W979
Style number: CR705



Perfect Portobello

Color code: W989
Style number: CR705

Testing

Feature	Description
Classification	(ASTM F1700) Class III, Type B, Embossed
Squareness	(ASTM F2421) ±0.10 in
Size and Tolerance	(ASTM F2421) ±0.016 in
Thickness	(ASTM F386) ± .005 in
Flexibility	(ASTM F137) Passes
Dimensional Stability	(ASTM F2199) Passes
Static Load Limit	(ASTM F970) 1000 psi
Residual Indentation	(ASTM F1914) Passes
Resistance to Chemicals	(ASTM F925) Passes
Resistance to Light	(ASTM F1515) Passes
Resistance to Heat	(ASTM F1514) Passes
Radiant Flux	(ASTM E648) Class 1
Smoke Density	(ASTM E662) □ 450
Wear Layer Thickness	12 mil (0.3 mm)
Lightfastness	(ASTM F1515) Passes

Sustainability

Feature	Description
Embodied Carbon	11.9 kg CO2e/sq m2
Carbon Handprint	-12.5 kg CO2e/sq m2
Beyond Carbon Neutral	-0.595
EPD	EPD Vinyl Tile
Material Health	Free of Orthophthalates and Heavy Metals
LEED	Calculate LEED on Ecomedes
Mindful Materials	Participates in Mindful Materials Library
MindClick Rating	Achiever
Country of Origin	China

Packaging

Feature	Description
Pieces per Carton	27
Weight per Piece	1.35
Cartons Per Pallet	60
Square Feet per Carton	54
Weight per Carton	36.45

Warranties

Limited 10 Year Light Commercial Warranty