

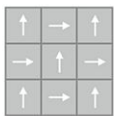
# Academic View

## Overview

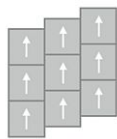
Feature	Description
Collection	Art Exposure
Style	Academic View (BT433)
Product Type	Carpet Tile
Size	24 in x 24 in
Construction	Tufted
Surface Appearance	Textured Patterned Multi-Colored Loop
Fiber	ColorStrand® Nylon
Dye Method	Solution Dyed
Stain Release Technology	EcoSentry Plus Stain Protection
Soil Release Technology	EcoSentry Soil Protection
Backing	Ecoflex Matrix
Pile Weight	17 oz/yd2 (576 g/m2)
Gauge	1/12 (47.00 rows per 10 cm)
Stitches per Inch	12 (47.2 per 10cm)
Pile Thickness	0.091
Total Thickness	.184" (4.67 mm)
Installation	FlexLok
Installation Method	Quarter Turn, Vertical Ashlar, Brick Ashlar, Monolithic, Multi Directional
Recommended Adhesive	Enpress, M700 Plus, FlexLok+ Tabs, Total Bond



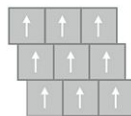
## Recommended Installation Methods



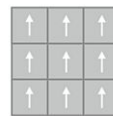
Quarter Turn



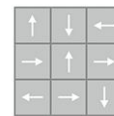
Vertical Ashlar



Brick Ashlar



Monolithic



Multi Directional

## Colorways



### Ecru

Color code: 958  
Style number: BT433



### Slate

Color code: 959  
Style number: BT433



### Cadet

Color code: 569  
Style number: BT433



### Charcoal

Color code: 989  
Style number: BT433



### Fallow

Color code: 853  
Style number: BT433



### Platinum

Color code: 924  
Style number: BT433

## Testing

Feature	Description
TARR Rating	Heavy
Flammability	(ASTM E648) Class 1 - Glue Down
Static Propensity	(AATC 134) Under 3.5 KV
Smoke Density	(ASTM E662) Less than 450

## Sustainability

Feature	Description
Embodied Carbon	7.45 kg CO2e/sq m2
Carbon Handprint	-7.82 kg CO2e/sq m2
Beyond Carbon Neutral	-0.37
Total Recycled Content	45%
EPD	EcoFlex Matrix EPD
HPD	EcoFlex Matrix HPD
Material Health	Declare Red List Free
NSF 140	<a href="#">EcoFlex Matrix - NSF 140 Gold</a>
LEED	<a href="#">Calculate LEED on Ecomedes</a>
Mindful Materials	Participates
MindClick Rating	Achiever
End of Life	ReCover
Country Of Origin	USA

## Packaging

Feature	Description
Square Yards Per Carton	10.67
Pieces per Carton	24
Cartons Per Pallet	22
Weight Per Carton	38.760
Weight per Piece	1.615

# Warranties

---

Lifetime Limited Carpet Tile Warranty, Lifetime Limited Colorfastness to Light, 10 Year Limited Colorfastness to Atmospheric Contaminants, 10 Year Limited Stain Warranty, Lifetime Static