

Accredited

Overview

Feature	Description
Collection	Learn and Live
Style	Accredited (GT431)
Product Type	Carpet Tile
Size	12" X 36"
Construction	Tufted
Surface Appearance	Level Heathered Loop
Fiber	Duracolor® Tricor Premium Nylon
Dye Method	Solution Dyed
Stain Release Technology	Permanent, Built into Fiber
Soil Release Technology	EcoSentry Soil Protection
Backing	EcoFlex ONE
Pile Weight	17.00 oz/yd2 (576 g/m2)
Gauge	1/12 (47.00 rows per 10 cm)
Stitches per Inch	11.5 (45.28 per 10cm)
Total Thickness	0.265" (6.73 mm)
Density	7650
Installation	Glue Down, FlexLok
Installation Method	Half Lap, Brick Ashlar, Basket Weave, Plank Half Lap, Random, Herringbone
Recommended Adhesive	Enpress, M700 Plus, FlexLok+ Tabs, Total Bond



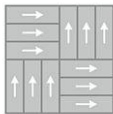
Recommended Installation Methods



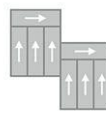
Half Lap



Brick Ashlar



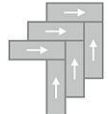
Basket Weave



Plank Half Lap



Random



Herringbone

Colorways



Masters

Color code: 565
Style number: GT431



Bachelors

Color code: 858
Style number: GT431



Doctorate

Color code: 969
Style number: GT431

Testing

Feature	Description
TARR Rating	Severe
GSA Stain Release	Pass
Flammability	(ASTM E648) Class 1 - Glue Down
Static Propensity	(AATC 134) Under 3.5 KV
Smoke Density	(ASTM E662) Less than 450

Sustainability

Feature	Description
Embodied Carbon	5.13 kg CO2e/sq m2
Carbon Handprint	-5.39 kg CO2e/sq m2
Beyond Carbon Neutral	-0.26
Total Recycled Content	74%
Pre-Consumer Recycled Content	64%
Post-Consumer Recycled Content	10%
EPD	EcoFlex ONE EPD
HPD	EcoFlex ONE HPD
Material Health	Declare Red List Free
NSF 140	EcoFlex ONE - NSF 140 Platinum
LEED	Calculate LEED on Ecomedes
Mindful Materials	Participates
MindClick Rating	Achiever
End of Life	ReCover
Country Of Origin	USA

Packaging

Feature	Description
Square Yards Per Carton	4.67
Cartons Per Pallet	44
Weight Per Carton	25.48

Warranties

Lifetime Limited Carpet Tile Warranty, Lifetime Limited Duracolor Stain Warranty, Lifetime Static