

Bark Community

Overview

Feature	Description
Collection	Lichen Community
Style	Bark Community (GT473)
Product Type	Carpet Tile
Size	12" X 36"
Construction	Pattern Perfect
Surface Appearance	Textured Patterned Multi-Colored Loop
Fiber	Duracolor® Tricor Premium Nylon
Dye Method	Solution Dyed
Stain Release Technology	Permanent, Built into the Fiber
Soil Release Technology	EcoSentry Soil Protection
Backing	EcoFlex ONE
Pile Weight	24.00 oz/yd2 (814 g/m2)
Gauge	1/12 (47.00 rows per 10cm)
Stitches per Inch	9.4 (37.01 per 10cm)
Density	6496
Installation	Glue Down, FlexLok
Installation Method	Monolithic, Half Lap, Brick Ashlar, Basket Weave, Plank Half Lap, Monolithic Weave, Plank Half Lap, Monolithic Stepping, Random, Herringbone
Recommended Adhesive	Enpress, M700 Plus, FlexLok+ Tabs, Total Bond



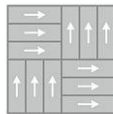
Recommended Installation Methods



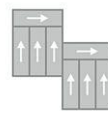
Half Lap



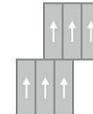
Brick Ashlar



Basket Weave



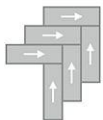
Plank Half Lap



Monolithic Stepping



Random



Herringbone

Colorways



858

Color code: **858**

Style number: **GT473**

Testing

Feature	Description
TARR Rating	Heavy
GSA Stain Release	Pass
Flammability	(ASTM E648) Class 1 - Glue Down
Static Propensity	(AATC 134) Under 3.5 KV
Smoke Density	(ASTM E662) Less than 450

Sustainability

Feature	Description
Embodied Carbon	5.82 kg CO2e/sq m2
Carbon Handprint	-6.11 kg CO2e/sq m2
Beyond Carbon Neutral	-0.29
Total Recycled Content	74%
Pre-Consumer Recycled Content	64%
Post-Consumer Recycled Content	10%
EPD	EcoFlex ONE EPD
HPD	EcoFlex ONE HPD
Material Health	Declare Red List Free
NSF 140	EcoFlex ONE - NSF 140 Platinum
LEED	Calculate LEED on Ecomedes
Indoor Air Quality	GLP 1171
Mindful Materials	Participates
MindClick Rating	Achiever
End of Life	ReCover
Country Of Origin	USA

Packaging

Feature	Description
Square Yards Per Carton	4.67
Cartons Per Pallet	44
Weight Per Carton	34.72

Warranties

Lifetime Limited Carpet Tile Warranty, Lifetime Limited Duracolor Stain Warranty, Lifetime Static