

**PURE GENIUS II**

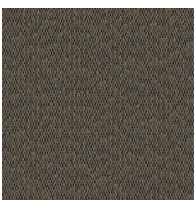
**Artist II 12' BC380**

12 ft Broadloom



<b>Collection</b>	Pure Genius II
<b>Style</b>	Artist II 12' (BC380)
<b>Product Type</b>	Broadloom
<b>Size</b>	12 ft
<b>Pattern Repeat</b>	6"W X 1"L
<b>Construction</b>	Tufted
<b>Surface Appearance</b>	Textured Patterned Loop
<b>Fiber</b>	ColorStrand® Nylon
<b>Dye Method</b>	Solution Dyed/Yarn Dyed
<b>Stain Release Technology</b>	EcoSentry Plus Stain Protection
<b>Soil Release Technology</b>	EcoSentry Soil Protection
<b>Backing</b>	Abac - Weldlok
<b>Tufted Pile Weight</b>	18 oz/yd2 (610 g/m2)
<b>Pile Height</b>	0.116
<b>Gauge</b>	1/10 (39.37 rows per 10 cm)
<b>Stitches per Inch</b>	12 (47.2 per 10cm)
<b>Pile Thickness</b>	0.116
<b>Total Thickness</b>	0.243 "
<b>Density</b>	5276
<b>Installation</b>	Glue Down, Double Stick, Tackless
<b>Recommended Adhesive</b>	NuBroadlok Premium Plus, NuBroadlok VRT, NuBroadlok Edge Sealer, NuBroadlok Moisture Proof Latex Seam Sealer

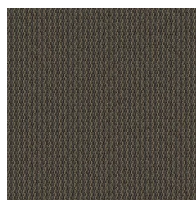
**Colorways**



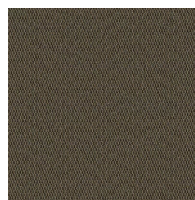
**Scientist**  
Color: 358



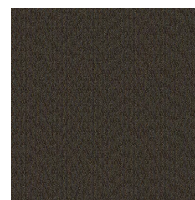
**Architect**  
Color: 689



**Composer**  
Color: 859



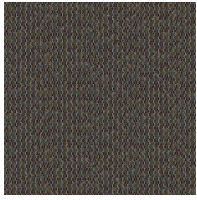
**Educator**  
Color: 862



**Scholar**  
Color: 883

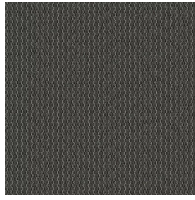


**Philosopher**  
Color: 884



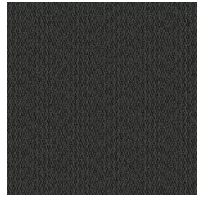
**Archaeologist**

Color: 955



**Mathematician**

Color: 983



**Writer**

Color: 999

## Testing

<b>TARR Rating</b>	Severe
<b>Flammability</b>	(ASTM E648) Class 1 - Glue Down
<b>Static Propensity</b>	(AATC 134) Under 3.5 KV
<b>Smoke Density</b>	(ASTM E662) Less than 450

## Sustainability

<b>Embodied Carbon</b>	17.5 kg CO <sub>2</sub> e/m <sup>2</sup>
<b>Carbon Handprint</b>	-18.375 kg CO <sub>2</sub> e/m <sup>2</sup>
<b>Beyond Carbon Neutral</b>	-0.875 kg CO <sub>2</sub> e/m <sup>2</sup>
<b>Total Recycled Content</b>	14.48%
<b>Pre-Consumer Recycled Content</b>	14.48%
<b>EPD</b>	<a href="#">Weldlok EPD</a>
<b>HPD</b>	<a href="#">Weldlok HPD</a>
<b>Material Health</b>	Declare Red List Free
<b>NSF 140</b>	<a href="#">Weldlok - NSF 140 Gold</a>
<b>LEED</b>	<a href="#">Calculate LEED on Ecomedes</a>
<b>Mindful Materials</b>	Participates
<b>MindClick Rating</b>	Leader
<b>End of Life</b>	<a href="#">ReCover</a>
<b>Country Of Origin</b>	USA

## Warranties

[Lifetime Limited Colorfastness to Light](#)

[10 Year Limited Colorfastness to Atmospheric Contaminants](#)

[10 Year Limited Stain Warranty](#)