

**PURE GENIUS II**

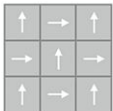
**Artist II 24 x 24 BT380**

24 in x 24 in Carpet Tile



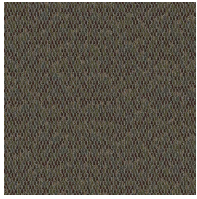
<b>Collection</b>	Pure Genius II
<b>Style</b>	Artist II 24 x 24 (BT380)
<b>Product Type</b>	Carpet Tile
<b>Size</b>	24 in x 24 in
<b>Construction</b>	Tufted
<b>Surface Appearance</b>	Textured Patterned Loop
<b>Fiber</b>	ColorStrand® Nylon
<b>Dye Method</b>	Solution Dyed/Yarn Dyed
<b>Stain Release Technology</b>	EcoSentry Plus Stain Protection
<b>Soil Release Technology</b>	EcoSentry Soil Protection
<b>Backing</b>	Ecoflex Matrix
<b>Tufted Pile Weight</b>	15 oz/yd2 (509 g/m2)
<b>Pile Height</b>	0.126
<b>Gauge</b>	1/10 (39.37 rows per 10 cm)
<b>Stitches per Inch</b>	12 (47.2 per 10cm)
<b>Pile Thickness</b>	0.126
<b>Total Thickness</b>	0.201 "
<b>Density</b>	4286
<b>Installation</b>	FlexLok
<b>Recommended Adhesive</b>	Enpress, M700 Plus, FlexLok+ Tabs, Total Bond

**Recommended Installation Methods**

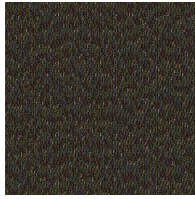


Quarter Turn

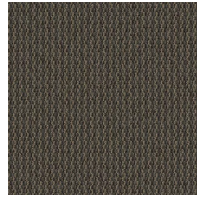
## Colorways



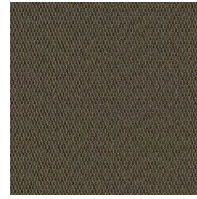
Scientist  
Color: 358



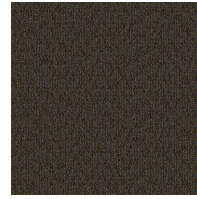
Architect  
Color: 689



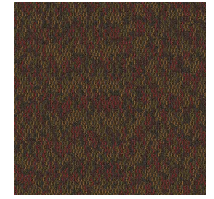
Composer  
Color: 859



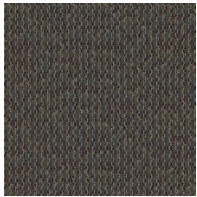
Educator  
Color: 862



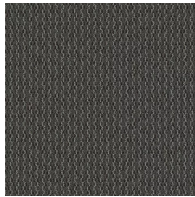
Scholar  
Color: 883



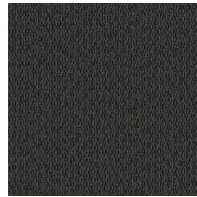
Philosopher  
Color: 884



Archaeologist  
Color: 955



Mathematician  
Color: 983



Writer  
Color: 999

## Testing

<b>TARR Rating</b>	Severe
<b>Flammability</b>	(ASTM E648) Class 1 - Glue Down
<b>Static Propensity</b>	(AATC 134) Under 3.5 KV
<b>Smoke Density</b>	(ASTM E662) Less than 450

## Sustainability

<b>Embodied Carbon</b>	6.93 kg CO2e/m2
<b>Carbon Handprint</b>	-7.28 kg CO2e/m2
<b>Beyond Carbon Neutral</b>	-0.35 kg CO2e/m2
<b>Total Recycled Content</b>	41.33%
<b>Pre-Consumer Recycled Content</b>	41.33%
<b>EPD</b>	<a href="#">EcoFlex Matrix EPD</a>
<b>HPD</b>	<a href="#">EcoFlex Matrix HPD</a>
<b>Material Health</b>	Declare Red List Free
<b>NSF 140</b>	<a href="#">EcoFlex Matrix - NSF 140 Gold</a>
<b>LEED</b>	<a href="#">Calculate LEED on Ecomedes</a>
<b>Indoor Air Quality</b>	GLP 1171
<b>Mindful Materials</b>	Participates
<b>MindClick Rating</b>	Achiever
<b>End of Life</b>	<a href="#">ReCover</a>
<b>Country Of Origin</b>	USA

## Packaging

---

Square Yards Per Carton	10.67
Pieces Per Carton	24
Cartons Per Pallet	22

## Warranties

---

[Lifetime Limited Carpet Tile Warranty](#)

[Lifetime Limited Colorfastness to Light](#)

[10 Year Limited Colorfastness to Atmospheric Contaminants](#)

[10 Year Limited Stain Warranty](#)