

ARTISANAL

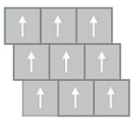
Threaded Craft BT414

24 in x 24 in Carpet Tile

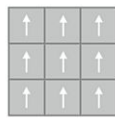


| | |
|---------------------------------|---|
| Collection | Artisanal |
| Style | Threaded Craft (BT414) |
| Product Type | Carpet Tile |
| Size | 24 in x 24 in |
| Construction | Tufted |
| Surface Appearance | Textured Patterned Loop |
| Fiber | ColorStrand® Nylon |
| Dye Method | Solution Dyed |
| Stain Release Technology | EcoSentry Plus Stain Protection |
| Soil Release Technology | EcoSentry Soil Protection |
| Backing | Ecoflex Matrix |
| Tufted Pile Weight | 15 oz/yd2 (509 g/m2) |
| Pile Height | 0.084 |
| Gauge | 1/12 (47.00 rows per 10 cm) |
| Stitches per Inch | 13.3 (52.4 per 10cm) |
| Pile Thickness | 0.084 |
| Density | 6428 |
| Installation | FlexLok |
| Recommended Adhesive | Enpress, M700 Plus, FlexLok+ Tabs, Total Bond |

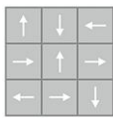
Recommended Installation Methods



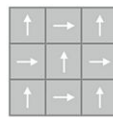
Brick Ashlar



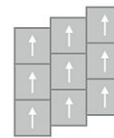
Monolithic



Multi Directional

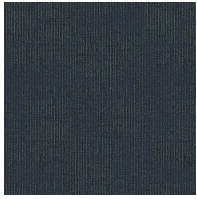


Quarter Turn

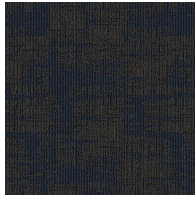


Vertical Ashlar

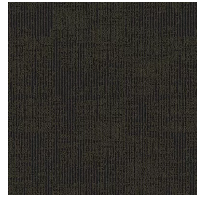
Colorways



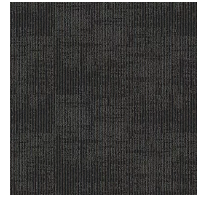
Jewel
Color: 7559



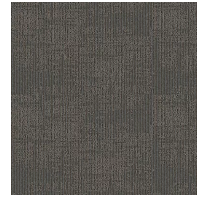
Twilight
Color: 7568



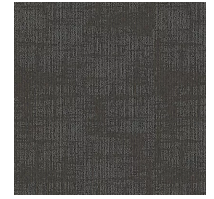
Earth
Color: 7688



Dusk
Color: 7879



Shell
Color: 7927



Mist
Color: 7948

Testing

| | |
|--------------------------|---------------------------------|
| TARR Rating | Heavy |
| Flammability | (ASTM E648) Class 1 - Glue Down |
| Static Propensity | (AATC 134) Under 3.5 KV |
| Smoke Density | (ASTM E662) Less than 450 |

Sustainability

| | |
|--------------------------------------|---|
| Embodied Carbon | 6.93 kg CO2e/m2 |
| Carbon Handprint | -7.28 kg CO2e/m2 |
| Beyond Carbon Neutral | -0.35 kg CO2e/m2 |
| Total Recycled Content | 41.33% |
| Pre-Consumer Recycled Content | 41.33% |
| EPD | EcoFlex Matrix EPD |
| HPD | EcoFlex Matrix HPD |
| Material Health | Declare Red List Free |
| NSF 140 | EcoFlex Matrix - NSF 140 Gold |
| LEED | Calculate LEED on Ecomedes |
| Indoor Air Quality | GLP 1171 |
| Mindful Materials | Participates |
| MindClick Rating | Achiever |
| End of Life | ReCover |
| Country Of Origin | USA |

Packaging

| | |
|--------------------------------|-------|
| Square Yards Per Carton | 10.67 |
| Pieces Per Carton | 24 |
| Cartons Per Pallet | 22 |

Warranties

[Lifetime Limited Carpet Tile Warranty](#)

[Lifetime Limited Colorfastness to Light](#)

[10 Year Limited Colorfastness to Atmospheric Contaminants](#)

[10 Year Limited Stain Warranty](#)