

**ART EXPOSURE**

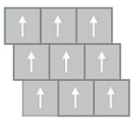
**Adaptable BT432**

24 in x 24 in Carpet Tile

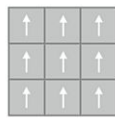


<b>Collection</b>	Art Exposure
<b>Style</b>	Adaptable (BT432)
<b>Product Type</b>	Carpet Tile
<b>Size</b>	24 in x 24 in
<b>Construction</b>	Tufted
<b>Surface Appearance</b>	Textured Patterned Loop
<b>Fiber</b>	ColorStrand® Nylon
<b>Dye Method</b>	Solution Dyed
<b>Stain Release Technology</b>	EcoSentry Plus Stain Protection
<b>Soil Release Technology</b>	EcoSentry Soil Protection
<b>Backing</b>	Ecoflex Matrix
<b>Tufted Pile Weight</b>	17 oz/yd2 (576 g/m2)
<b>Pile Height</b>	0.101
<b>Gauge</b>	1/12 (47.00 rows per 10 cm)
<b>Stitches per Inch</b>	12 (47.2 per 10cm)
<b>Pile Thickness</b>	0.101
<b>Total Thickness</b>	.188" (4.78 mm)
<b>Installation</b>	FlexLok
<b>Recommended Adhesive</b>	Enpress, M700 Plus, FlexLok+ Tabs, Total Bond

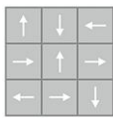
**Recommended Installation Methods**



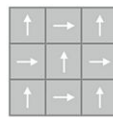
Brick Ashlar



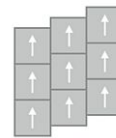
Monolithic



Multi Directional



Quarter Turn

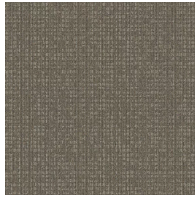


Vertical Ashlar

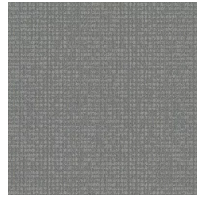
## Colorways



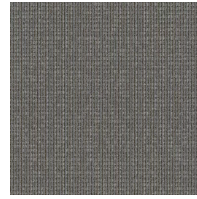
**Cadet**  
Color: 569



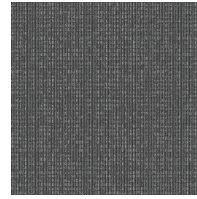
**Fallow**  
Color: 853



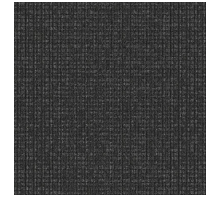
**Platinum**  
Color: 924



**Ecu**  
Color: 958



**Slate**  
Color: 959



**Charcoal**  
Color: 989

## Testing

<b>TARR Rating</b>	Heavy
<b>Flammability</b>	(ASTM E648) Class 1 - Glue Down
<b>Static Propensity</b>	(AATC 134) Under 3.5 KV
<b>Smoke Density</b>	(ASTM E662) Less than 450

## Sustainability

<b>Embodied Carbon</b>	7.45 kg CO2e/m2
<b>Carbon Handprint</b>	-7.82 kg CO2e/m2
<b>Beyond Carbon Neutral</b>	-0.37 kg CO2e/m2
<b>Total Recycled Content</b>	41.33%
<b>Pre-Consumer Recycled Content</b>	41.33%
<b>EPD</b>	<a href="#">EcoFlex Matrix EPD</a>
<b>HPD</b>	<a href="#">EcoFlex Matrix HPD</a>
<b>Material Health</b>	Declare Red List Free
<b>NSF 140</b>	<a href="#">EcoFlex Matrix - NSF 140 Gold</a>
<b>LEED</b>	<a href="#">Calculate LEED on Ecomedes</a>
<b>Indoor Air Quality</b>	GLP 1171
<b>Mindful Materials</b>	Participates
<b>MindClick Rating</b>	Achiever
<b>End of Life</b>	<a href="#">ReCover</a>
<b>Country Of Origin</b>	USA

## Packaging

<b>Square Yards Per Carton</b>	10.67
<b>Pieces Per Carton</b>	24
<b>Cartons Per Pallet</b>	22

## Warranties

---

[Lifetime Limited Carpet Tile Warranty](#)

[Lifetime Limited Colorfastness to Light](#)

[10 Year Limited Colorfastness to Atmospheric Contaminants](#)

[10 Year Limited Stain Warranty](#)