

ART EXPOSURE

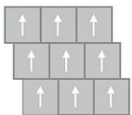
Enlivened BT455

24 in x 24 in Carpet Tile

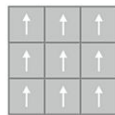


Collection	Art Exposure
Style	Enlivened (BT455)
Product Type	Carpet Tile
Size	24 in x 24 in
Construction	Tufted
Surface Appearance	Textured Patterned Loop
Fiber	ColorStrand® Nylon
Dye Method	Solution Dyed
Stain Release Technology	EcoSentry Plus Stain Protection
Soil Release Technology	EcoSentry Soil Protection
Backing	Ecoflex Matrix
Tufted Pile Weight	17 oz/yd2 (576 g/m2)
Pile Height	0.093
Gauge	1/12 (47.00 rows per 10 cm)
Stitches per Inch	12 (47.2 per 10cm)
Pile Thickness	0.093
Total Thickness	.196" (4.98 mm)
Density	6580
Installation	FlexLok
Recommended Adhesive	Enpress, M700 Plus, FlexLok+ Tabs, Total Bond

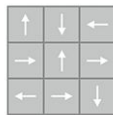
Recommended Installation Methods



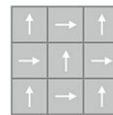
Brick Ashlar



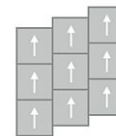
Monolithic



Multi Directional

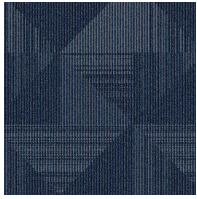


Quarter Turn



Vertical Ashlar

Colorways



Cadet
Color: 569



Fallow
Color: 853



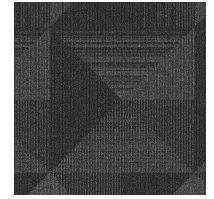
Platinum
Color: 924



Ecru
Color: 958



Slate
Color: 959



Charcoal
Color: 989

Testing

TARR Rating	Heavy
Flammability	(ASTM E648) Class 1 - Glue Down
Static Propensity	(AATC 134) Under 3.5 KV
Smoke Density	(ASTM E662) Less than 450

Sustainability

Embodied Carbon	7.45 kg CO2e/m2
Carbon Handprint	-7.82 kg CO2e/m2
Beyond Carbon Neutral	-0.37 kg CO2e/m2
Total Recycled Content	41.33%
Pre-Consumer Recycled Content	41.33%
EPD	EcoFlex Matrix EPD
HPD	EcoFlex Matrix HPD
Material Health	Declare Red List Free
NSF 140	EcoFlex Matrix - NSF 140 Gold
LEED	Calculate LEED on Ecomedes
Indoor Air Quality	GLP 1171
Mindful Materials	Participates
MindClick Rating	Achiever
End of Life	ReCover
Country Of Origin	USA

Packaging

Square Yards Per Carton	10.67
Pieces Per Carton	24
Cartons Per Pallet	22

Warranties

[Lifetime Limited Carpet Tile Warranty](#)

[Lifetime Limited Colorfastness to Light](#)

[10 Year Limited Colorfastness to Atmospheric Contaminants](#)

[10 Year Limited Stain Warranty](#)