

SWITCHCODE

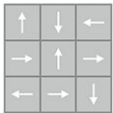
Umpteen Tone BT595

24 in x 24 in Carpet Tile

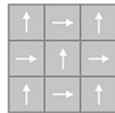


Collection	SwitchCode
Style	Umpteen Tone (BT595)
Product Type	Carpet Tile
Size	24 in x 24 in
Construction	Tufted
Surface Appearance	Textured Patterned Loop
Fiber	ColorStrand® Nylon
Dye Method	Solution Dyed
Stain Release Technology	EcoSentry Plus Stain Protection
Soil Release Technology	EcoSentry Soil Protection
Backing	Ecoflex Matrix
Tufted Pile Weight	18 oz/yd2 (610 g/m2)
Pile Height	0.122
Gauge	1/12 (47.00 rows per 10cm)
Stitches per Inch	12.7 (50 per 10cm)
Pile Thickness	0.122
Total Thickness	0.242 "
Density	5311
Installation	FlexLok
Recommended Adhesive	Enpress, M700 Plus, FlexLok+ Tabs, Total Bond

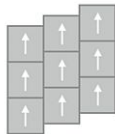
Recommended Installation Methods



Multi Directional

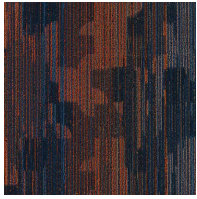


Quarter Turn

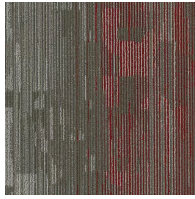


Vertical Ashlar

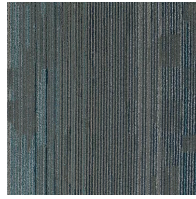
Colorways



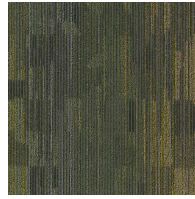
Juliet
Color: 542



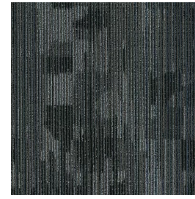
India
Color: 843



Hotel
Color: 935



Golf
Color: 946



Foxtrot
Color: 965

Testing

TARR Rating	Heavy
Flammability	(ASTM E648) Class 1 - Glue Down
Static Propensity	(AATC 134) Under 3.5 KV
Smoke Density	(ASTM E662) Less than 450

Sustainability

Embodied Carbon	7.71 kg CO2e/m2
Carbon Handprint	-8.1 kg CO2e/m2
Beyond Carbon Neutral	-0.39 kg CO2e/m2
Total Recycled Content	41.33%
Pre-Consumer Recycled Content	41.33%
EPD	EcoFlex Matrix EPD
HPD	EcoFlex Matrix HPD
Material Health	Declare Red List Free
NSF 140	EcoFlex Matrix - NSF 140 Gold
LEED	Calculate LEED on Ecomedes
Indoor Air Quality	GLP 1171
Mindful Materials	Participates
MindClick Rating	Achiever
End of Life	ReCover
Country Of Origin	USA

Packaging

Square Yards Per Carton	10.67
Pieces Per Carton	24
Cartons Per Pallet	22

Warranties

[Lifetime Limited Carpet Tile Warranty](#)

[Lifetime Limited Colorfastness to Light](#)

[10 Year Limited Colorfastness to Atmospheric Contaminants](#)

[10 Year Limited Stain Warranty](#)