

TUFF STUFF II

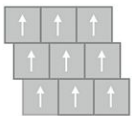
Step Up II GT311

24 in x 24 in Carpet Tile

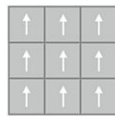


Collection	Tuff Stuff II
Style	Step Up II (GT311)
Product Type	Carpet Tile
Size	24 in x 24 in
Construction	Walk-Off Tile
Surface Appearance	Textured Patterned Tip Shear
Fiber	Duracolor® Premium Nylon
Stain Release Technology	Permanent, Built into Fiber
Soil Release Technology	EcoSentry Soil Protection
Backing	Nxt Walkoff
Tufted Pile Weight	38 oz/yd2 (1288 g/m2)
Gauge	0
Stitches per Inch	8.5 (33.5 per 10cm)
Density	9500
Installation	Glue Down
Recommended Adhesive	Enpress

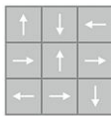
Recommended Installation Methods



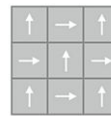
Brick Ashlar



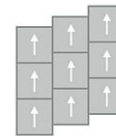
Monolithic



Multi Directional

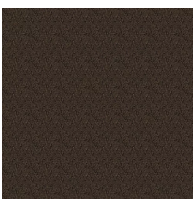


Quarter Turn

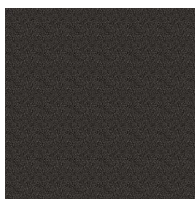


Vertical Ashlar

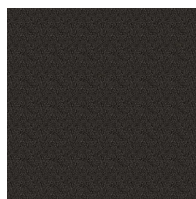
Colorways



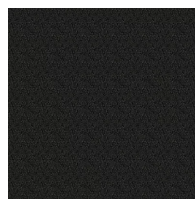
Walnut
Color: 859



Cobalt
Color: 955



Iron Ore
Color: 983



Obsidian
Color: 989

Testing

TARR Rating	Severe
GSA Stain Release	Pass
Flammability	(ASTM E648) Class 1 - Glue Down
Static Propensity	(AATC 134) Under 3.5 KV
Smoke Density	(ASTM E662) Less than 450

Sustainability

Embodied Carbon	15.1 kg CO2e/m2
Carbon Handprint	-15.85 kg CO2e/m2
Beyond Carbon Neutral	-0.75 kg CO2e/m2
EPD	EcoFlex NXT EPD
HPD	EcoFlex NXT HPD
Material Health	Declare Red List Free
NSF 140	EcoFlex NXT - NSF 140 Gold
LEED	Calculate LEED on Ecomedes
Mindful Materials	Participates
MindClick Rating	Achiever
End of Life	ReCover
Country Of Origin	USA

Packaging

Square Yards Per Carton	6.22
Pieces Per Carton	14
Cartons Per Pallet	20