

**TUFF STUFF II**

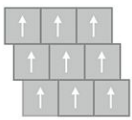
**Step In Style II GT312**

24 in x 24 in Carpet Tile

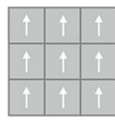


<b>Collection</b>	Tuff Stuff II
<b>Style</b>	Step In Style II (GT312)
<b>Product Type</b>	Carpet Tile
<b>Size</b>	24 in x 24 in
<b>Construction</b>	Walk-Off Tile
<b>Surface Appearance</b>	Textured Patterned Loop
<b>Fiber</b>	ColorStrand® Nylon
<b>Stain Release Technology</b>	Permanent, Built into Fiber
<b>Soil Release Technology</b>	EcoSentry Soil Protection
<b>Backing</b>	Nxt Walkoff
<b>Gauge</b>	0
<b>Stitches per Inch</b>	10 (39.4 per 10cm)
<b>Pile Thickness</b>	0.000
<b>Total Thickness</b>	0.317 "
<b>Density</b>	7448
<b>Installation</b>	Glue Down
<b>Recommended Adhesive</b>	Enpress

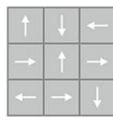
**Recommended Installation Methods**



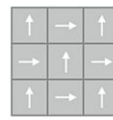
Brick Ashlar



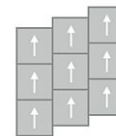
Monolithic



Multi Directional

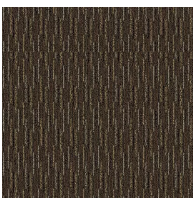


Quarter Turn



Vertical Ashlar

**Colorways**



**Walnut**

Color: 859



**Cobalt**

Color: 955



**Iron Ore**

Color: 983



**Obsidian**

Color: 989

## Testing

---

<b>TARR Rating</b>	Severe
<b>GSA Stain Release</b>	Pass
<b>Flammability</b>	(ASTM E648) Class 1 - Glue Down
<b>Static Propensity</b>	(AATC 134) Under 3.5 KV
<b>Smoke Density</b>	(ASTM E662) Less than 450

## Sustainability

---

<b>Embodied Carbon</b>	15.1 kg CO <sub>2</sub> e/m <sup>2</sup>
<b>Carbon Handprint</b>	-15.85 kg CO <sub>2</sub> e/m <sup>2</sup>
<b>Beyond Carbon Neutral</b>	-0.75 kg CO <sub>2</sub> e/m <sup>2</sup>
<b>EPD</b>	<a href="#">EcoFlex NXT EPD</a>
<b>HPD</b>	<a href="#">EcoFlex NXT HPD</a>
<b>Material Health</b>	Declare Red List Free
<b>NSF 140</b>	<a href="#">EcoFlex NXT - NSF 140 Gold</a>
<b>LEED</b>	<a href="#">Calculate LEED on Ecomedes</a>
<b>Mindful Materials</b>	Participates
<b>MindClick Rating</b>	Achiever
<b>End of Life</b>	<a href="#">ReCover</a>
<b>Country Of Origin</b>	USA

## Packaging

---

<b>Square Yards Per Carton</b>	6.22
<b>Pieces Per Carton</b>	14
<b>Cartons Per Pallet</b>	20