

PATHMAKERS

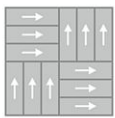
Concrete Bloom GT363

12 in x 36 in Carpet Tile

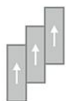


| | |
|---------------------------------|---|
| Collection | Pathmakers |
| Style | Concrete Bloom (GT363) |
| Product Type | Carpet Tile |
| Size | 12 in x 36 in |
| Construction | Pattern Perfect |
| Surface Appearance | Textured Patterned Loop |
| Fiber | Duracolor® Tricor Premium Nylon |
| Dye Method | Solution Dyed |
| Stain Release Technology | Permanent, Built into the Fiber |
| Soil Release Technology | EcoSentry Soil Protection |
| Backing | Ecoflex One |
| Tufted Pile Weight | 22 oz/yd ² (746 g/m ²) |
| Pile Height | 0.109 |
| Gauge | 1/12 (47.00 rows per 10cm) |
| Stitches per Inch | 9 (35.4 per 10cm) |
| Pile Thickness | 0.109 |
| Total Thickness | 0.348 " |
| Density | 7266 |
| Recommended Adhesive | Enpress, M700 Plus, FlexLok+ Tabs, Total Bond |

Recommended Installation Methods



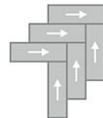
Basket Weave



Brick Ashlar



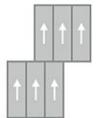
Half Lap



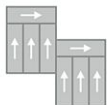
Herringbone



Monolithic



Monolithic Stepping

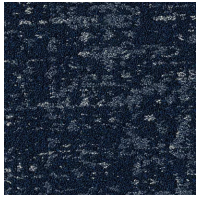


Plank Half Lap

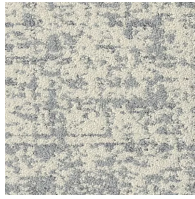


Random

Colorways



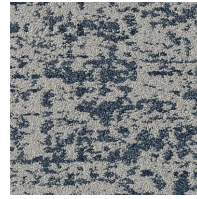
Dewdrop Dark
Color: 565



Serene Light
Color: 729



Birdsong Light
Color: 739



Dewdrop Light
Color: 745



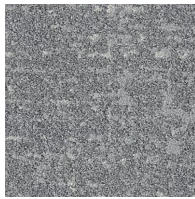
Wildwood Light
Color: 829



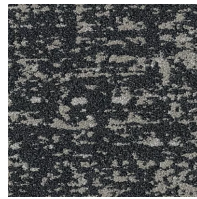
Oud Light
Color: 859



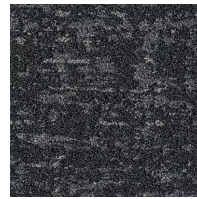
Wildwood Dark
Color: 868



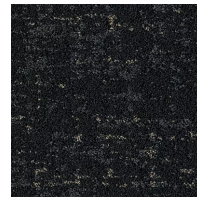
Serene Dark
Color: 927



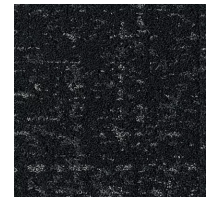
Birdsong Dark
Color: 938



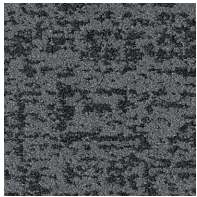
Oud Dark
Color: 978



Nocturnal Gold
Color: 981



Nocturnal Silver
Color: 987



Nocturnal Light
Color: 989

Testing

| | |
|--------------------------|---------------------------------|
| TARR Rating | Severe |
| Flammability | (ASTM E648) Class 1 - Glue Down |
| Static Propensity | (AATC 134) Under 3.5 KV |
| Smoke Density | (ASTM E662) Less than 453 |

Sustainability

| | |
|---------------------------------------|---------------------------------|
| Embodied Carbon | 5.06 kg CO2e/m2 |
| Carbon Handprint | -5.31 kg CO2e/m2 |
| Beyond Carbon Neutral | -0.25 kg CO2e/m2 |
| Total Recycled Content | 72.75% |
| Pre-Consumer Recycled Content | 63.56% |
| Post-Consumer Recycled Content | 9.19% |
| Multi-Attribute Certification | Living Product Challenge |
| EPD | EcoFlex ONE EPD |

| | |
|---------------------------|--|
| HPD | <u>EcoFlex ONE HPD</u> |
| Material Health | Declare Red List Free |
| NSF 140 | EcoFlex ONE- NSF 140 Platinum |
| Indoor Air Quality | GLP 1171 |
| Mindful Materials | Participates |
| MindClick Rating | Leader |
| End of Life | <u>ReCover</u> |
| Country Of Origin | USA |

Packaging

| | |
|--------------------------------|------|
| Square Yards Per Carton | 4.67 |
| Pieces Per Carton | 14 |
| Cartons Per Pallet | 44 |

Warranties

[Lifetime Limited Carpet Tile Warranty](#)

[Lifetime Limited Duracolor Stain Warranty](#)