

**TUFF STRIDE**

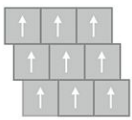
Line of Motion GT369

24 in x 24 in Carpet Tile

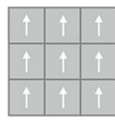


<b>Collection</b>	Tuff Stride
<b>Style</b>	Line of Motion (GT369)
<b>Product Type</b>	Carpet Tile
<b>Size</b>	24 in x 24 in
<b>Construction</b>	Walk-Off Tile
<b>Surface Appearance</b>	Textured Patterned Loop
<b>Fiber</b>	Duracolor® Tricor Premium Nylon
<b>Dye Method</b>	Solution Dyed
<b>Stain Release Technology</b>	Permanent, Built into Fiber
<b>Soil Release Technology</b>	EcoSentry Soil Protection
<b>Backing</b>	Ecoflex One
<b>Gauge</b>	1/12" (47.00 rows per 10 cm)
<b>Stitches per Inch</b>	10.2 (40.2 per 10cm)
<b>Density</b>	7,500
<b>Installation</b>	FlexLok
<b>Recommended Adhesive</b>	Enpress, M700 Plus, FlexLok+ Tabs, Total Bond

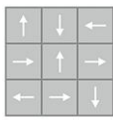
**Recommended Installation Methods**



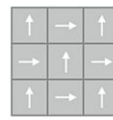
Brick Ashlar



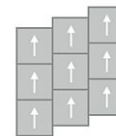
Monolithic



Multi Directional



Quarter Turn



Vertical Ashlar

**Colorways**



**Steel Blue**  
Color: 569



**Pavestone**  
Color: 858



**Ironwood**  
Color: 889



**Forge Gray**  
Color: 969

## Testing

---

<b>TARR Rating</b>	Severe
<b>Flammability</b>	ASTM E 648 Class I (Glue Down)
<b>Static Propensity</b>	AATCC-134 Under 3.5 KV
<b>Smoke Density</b>	ASTM E 662 Less than 450

## Sustainability

---

<b>Embodied Carbon</b>	5.26 kg CO2e/m2
<b>Carbon Handprint</b>	-5.52 kg CO2e/m2
<b>Beyond Carbon Neutral</b>	-0.26 kg CO2e/m2
<b>Total Recycled Content</b>	72.75%
<b>Pre-Consumer Recycled Content</b>	63.56%
<b>Post-Consumer Recycled Content</b>	9.19%
<b>Multi-Attribute Certification</b>	Living Product Challenge
<b>EPD</b>	<a href="#">EcoFlex ONE EPD</a>
<b>HPD</b>	<a href="#">EcoFlex ONE HPD</a>
<b>Material Health</b>	Red List Free
<b>NSF 140</b>	Platinum
<b>MindClick Rating</b>	Leader

## Packaging

---

<b>Square Yards Per Carton</b>	6.22
<b>Pieces Per Carton</b>	14
<b>Cartons Per Pallet</b>	20

## Warranties

---

[Lifetime Limited Carpet Tile Warranty](#)

[Lifetime Limited Duracolor Stain Warranty](#)