

**LEARN AND LIVE**

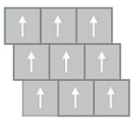
Side Stripe GT419

24 in x 24 in Carpet Tile

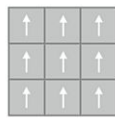


<b>Collection</b>	Learn and Live
<b>Style</b>	Side Stripe (GT419)
<b>Product Type</b>	Carpet Tile
<b>Size</b>	24 in x 24 in
<b>Construction</b>	Tufted
<b>Surface Appearance</b>	Textured Patterned Loop
<b>Fiber</b>	Duracolor® Tricor Premium Nylon
<b>Dye Method</b>	Solution Dyed
<b>Stain Release Technology</b>	Permanent, Built into Fiber
<b>Soil Release Technology</b>	EcoSentry Soil Protection
<b>Backing</b>	Ecoflex One
<b>Tufted Pile Weight</b>	17 oz/yd2 (576 g/m2)
<b>Pile Height</b>	0.080
<b>Gauge</b>	1/12 (47.00 rows per 10 cm)
<b>Stitches per Inch</b>	12.4 (48.8 per 10cm)
<b>Pile Thickness</b>	0.080
<b>Density</b>	7650
<b>Installation</b>	Glue Down, FlexLok
<b>Recommended Adhesive</b>	Enpress, M700 Plus, FlexLok+ Tabs, Total Bond

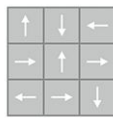
**Recommended Installation Methods**



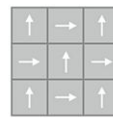
Brick Ashlar



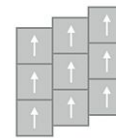
Monolithic



Multi Directional

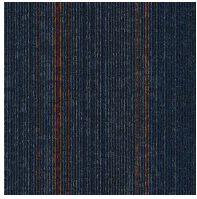


Quarter Turn

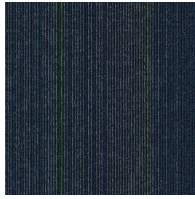


Vertical Ashlar

## Colorways



**City Park**  
Color: 562



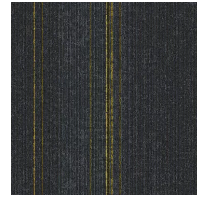
**Central**  
Color: 566



**Fairview**  
Color: 853



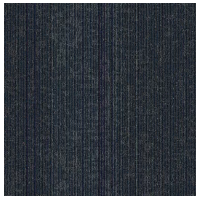
**Franklin**  
Color: 859



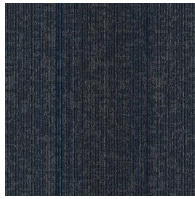
**Eastside**  
Color: 961



**Heritage**  
Color: 963



**Southeast**  
Color: 964



**Westpoint**  
Color: 965

## Testing

<b>TARR Rating</b>	Severe
<b>GSA Stain Release</b>	Pass
<b>Flammability</b>	(ASTM E648) Class 1 - Glue Down
<b>Static Propensity</b>	(AATC 134) Under 3.5 KV
<b>Smoke Density</b>	(ASTM E662) Less than 450

## Sustainability

<b>Embodied Carbon</b>	4.72 kg CO <sub>2</sub> e/m <sup>2</sup>
<b>Carbon Handprint</b>	-4.96 kg CO <sub>2</sub> e/m <sup>2</sup>
<b>Beyond Carbon Neutral</b>	-0.24 kg CO <sub>2</sub> e/m <sup>2</sup>
<b>Total Recycled Content</b>	72.75%
<b>Pre-Consumer Recycled Content</b>	63.56%
<b>Post-Consumer Recycled Content</b>	9.19%
<b>EPD</b>	<a href="#">EcoFlex ONE EPD</a>
<b>HPD</b>	HPD 2.1 EcoFlex ONE Gold - 1000 ppm
<b>Material Health</b>	Declare Red List Free
<b>NSF 140</b>	EcoFlex ONE - NSF 140 Gold
<b>LEED</b>	<a href="#">Calculate LEED on Ecomedes</a>
<b>Indoor Air Quality</b>	GLP 1171
<b>Mindful Materials</b>	Participates in Mindful Materials Library
<b>MindClick Rating</b>	Achiever

Country Of Origin

USA

## Packaging

---

Square Yards Per Carton

8.00

Pieces Per Carton

18

Cartons Per Pallet

22

## Warranties

---

[Lifetime Limited Carpet Tile Warranty](#)

[Lifetime Limited Duracolor Stain Warranty](#)