

**TEXTURAL EFFECTS**

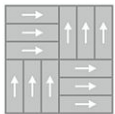
Thematic Thread GT423

12 in x 36 in Carpet Tile



<b>Collection</b>	Textural Effects
<b>Style</b>	Thematic Thread (GT423)
<b>Product Type</b>	Carpet Tile
<b>Size</b>	12 in x 36 in
<b>Construction</b>	Tufted
<b>Surface Appearance</b>	Textured Patterned Loop
<b>Fiber</b>	Duracolor® Tricor Premium Nylon
<b>Dye Method</b>	Solution Dyed
<b>Stain Release Technology</b>	Permanent, Built into Fiber
<b>Soil Release Technology</b>	EcoSentry Soil Protection
<b>Backing</b>	Ecoflex One
<b>Tufted Pile Weight</b>	20 oz/yd <sup>2</sup> (678 g/m <sup>2</sup> )
<b>Gauge</b>	1/12 (47.00 rows per 10 cm)
<b>Stitches per Inch</b>	11.7 (46.1 per 10cm)
<b>Total Thickness</b>	0.352 "
<b>Density</b>	7578
<b>Installation</b>	Glue Down, FlexLok
<b>Recommended Adhesive</b>	Enpress, M700 Plus, FlexLok+ Tabs, Total Bond

**Recommended Installation Methods**



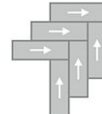
Basket Weave



Brick Ashlar



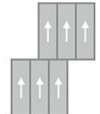
Half Lap



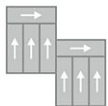
Herringbone



Monolithic



Monolithic Stepping

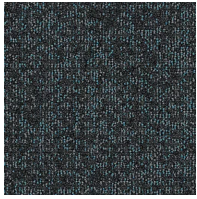


Plank Half Lap

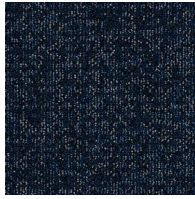


Random

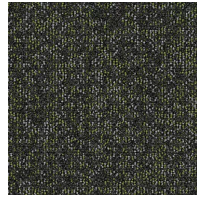
## Colorways



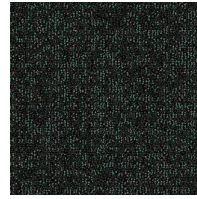
**Larimar**  
Color: 549



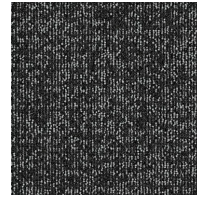
**Sodalite**  
Color: 577



**Olivine**  
Color: 667



**Aventurine**  
Color: 679



**Diorite**  
Color: 739



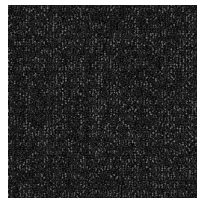
**Bronzite**  
Color: 869



**Granite**  
Color: 967



**Concrete**  
Color: 968



**Charcoal**  
Color: 989

## Testing

<b>TARR Rating</b>	Heavy
<b>GSA Stain Release</b>	Pass
<b>Flammability</b>	(ASTM E648) Class 1 - Glue Down
<b>Static Propensity</b>	(AATC 134) Under 3.5 KV
<b>Smoke Density</b>	(ASTM E662) Less than 450

## Sustainability

<b>Embodied Carbon</b>	4.92 kg CO <sub>2</sub> e/m <sup>2</sup>
<b>Carbon Handprint</b>	-5.17 kg CO <sub>2</sub> e/m <sup>2</sup>
<b>Beyond Carbon Neutral</b>	-0.25 kg CO <sub>2</sub> e/m <sup>2</sup>
<b>Total Recycled Content</b>	72.75%
<b>Pre-Consumer Recycled Content</b>	63.56%
<b>Post-Consumer Recycled Content</b>	9.19%
<b>EPD</b>	<a href="#">EcoFlex ONE EPD</a>
<b>HPD</b>	<a href="#">EcoFlex ONE HPD</a>
<b>Material Health</b>	Declare Red List Free
<b>NSF 140</b>	<a href="#">EcoFlex ONE - NSF 140 Platinum</a>
<b>LEED</b>	<a href="#">Calculate LEED on Ecomedes</a>
<b>Specify for a Cure</b>	Eligible
<b>Mindful Materials</b>	Participates
<b>MindClick Rating</b>	Achiever

End of Life

[ReCover](#)

Country Of Origin

USA

## Packaging

---

Square Yards Per Carton

4.67

Pieces Per Carton

14

Cartons Per Pallet

44

## Warranties

---

[Lifetime Limited Carpet Tile Warranty](#)

[Lifetime Limited Duracolor Stain Warranty](#)