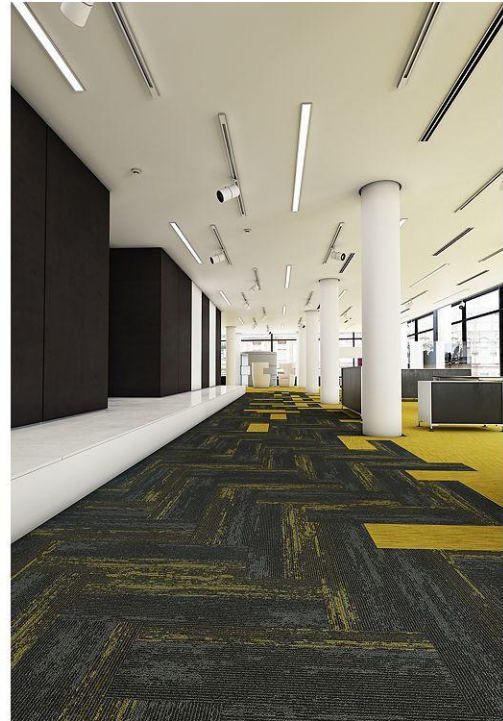


Disruptive Path

Overview

Feature	Description
Collection	Art Style
Style	Disruptive Path (BT430)
Product Type	Carpet Tile
Size	12" X 36"
Construction	Tufted
Surface Appearance	Level Multi-Colored Patterned Loop
Fiber	ColorStrand® Nylon
Dye Method	Solution Dyed
Stain Release Technology	EcoSentry Plus Stain Protection
Soil Release Technology	EcoSentry Soil Protection
Backing	EcoFlex Matrix
Pile Weight	17.00 oz/yd2 (576 g/m2)
Gauge	1/12 (47.00 rows per 10 cm)
Stitches per Inch	12 (47.24 per 10cm)
Total Thickness	0.274" (6.96 mm)
Density	7285
Installation	FlexLok
Installation Method	Monolithic, Half Lap, Brick Ashlar, Basket Weave, Plank Half Lap, Monolithic Weave, Plank Half Lap, Monolithic Stepping, Random, Herringbone
Recommended Adhesive	Enpress, M700 Plus, FlexLok+ Tabs, Total Bond



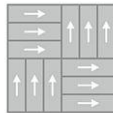
Recommended Installation Methods



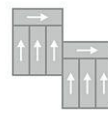
Half Lap



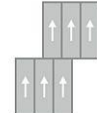
Brick Ashlar



Basket Weave



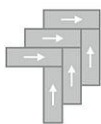
Plank Half Lap



Monolithic Stepping



Random



Herringbone

Colorways



Mellow Yellow

Color code: 911
Style number: BT430



Orange Crush

Color code: 913
Style number: BT430



Purple Dawn

Color code: 914
Style number: BT430



Blue Dusk

Color code: 915
Style number: BT430



Lime Rush

Color code: 916
Style number: BT430



Pink Berry

Color code: 919
Style number: BT430



Neon Citron

Color code: 931
Style number: BT430



Crimson Flash

Color code: 933
Style number: BT430



Cotton Candy

Color code: 944
Style number: BT430



Above Par

Color code: 946
Style number: BT430



Purple Ash

Color code: 954
Style number: BT430



Cosmic Sky

Color code: 955
Style number: BT430

Testing

Feature	Description
TARR Rating	Severe
Flammability	(ASTM E648) Class 1 - Glue Down
Static Propensity	(AATC 134) Under 3.5 KV
Smoke Density	(ASTM E662) Less than 450

Sustainability

Feature	Description
Embodied Carbon	7.45 kg CO2e/sq m2
Carbon Handprint	-7.82 kg CO2e/sq m2
Beyond Carbon Neutral	-0.37
Total Recycled Content	45%
Pre-Consumer Recycled Content	45%
EPD	EcoFlex Matrix EPD
HPD	EcoFlex Matrix HPD
Material Health	Declare Red List Free
NSF 140	EcoFlex Matrix - NSF 140 Gold
LEED	Calculate LEED on Ecomedes
Indoor Air Quality	GLP 1171
Mindful Materials	Participates
MindClick Rating	Achiever
End of Life	ReCover
Country Of Origin	USA

Packaging

Feature	Description
Square Yards Per Carton	8.00
Cartons Per Pallet	44
Weight Per Carton	29.04

Warranties

Lifetime Limited Carpet Tile Warranty, Lifetime Limited Colorfastness to Light, 10 Year Limited Colorfastness to Atmospheric Contaminants, 10 Year Limited Stain Warranty, Lifetime Static