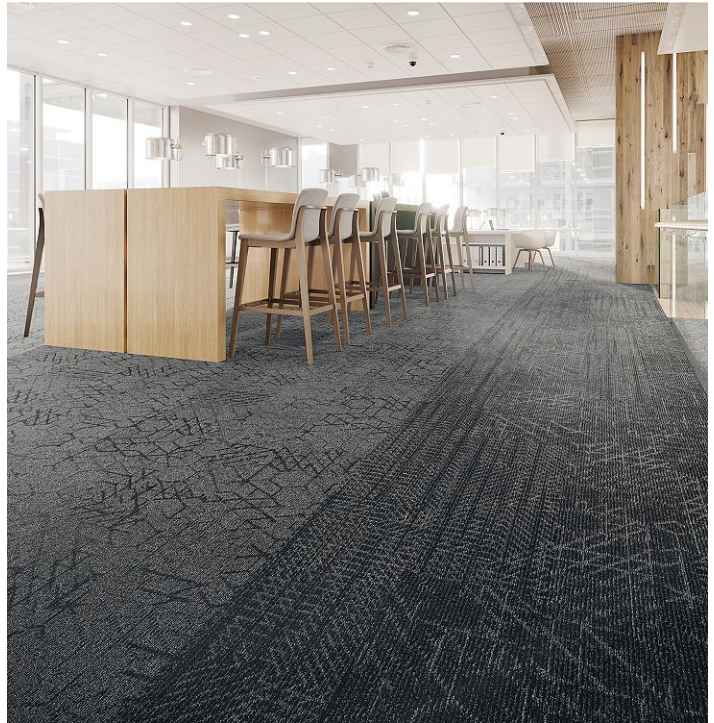


# Hidden Dimension

## Overview

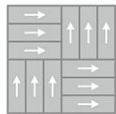


Feature	Description
Collection	Visual Edge
Style	Hidden Dimension (BT497)
Product Type	Carpet Tile
Size	12 in x 36 in
Construction	Tufted
Surface Appearance	Textured Patterned Loop
Fiber	ColorStrand® Nylon
Dye Method	Solution Dyed
Stain Release Technology	EcoSentry Plus Stain Protection
Soil Release Technology	EcoSentry Soil Protection
Backing	Ecoflex Matrix
Pile Weight	15 oz/yd <sup>2</sup> (509 g/m <sup>2</sup> )
Gauge	1/12 (47.00 rows per 10 cm)
Stitches per Inch	11.4 (44.9 per 10cm)
Pile Thickness	0.080
Installation	FlexLok
Installation Method	Monolithic, Half Lap, Brick Ashlar, Basket Weave, Plank Half Lap, Random, Herringbone
Recommended Adhesive	Enpress, M700 Plus, FlexLok+ Tabs, Total Bond

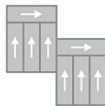
## Recommended Installation Methods



Brick Ashlar



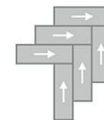
Basket Weave



Plank Half Lap



Random



Herringbone

## Colorways



### Metal Grey

Color code: 979  
Style number: BT497



### Dark Charcoal

Color code: 989  
Style number: BT497



### Indigo Ink

Color code: 593  
Style number: BT497



### Warm Neutral

Color code: 929  
Style number: BT497



### Wet Cement

Color code: 937  
Style number: BT497



### Rustic Taupe

Color code: 948  
Style number: BT497

## Testing

Feature	Description
TARR Rating	Heavy
Flammability	(ASTM E648) Class 1 - Glue Down
Static Propensity	(AATC 134) Under 3.5 KV
Smoke Density	(ASTM E662) Less than 450

## Sustainability

Feature	Description
Embodied Carbon	6.93 kg CO2e/sq m2
Carbon Handprint	-7.28 kg CO2e/sq m2
Beyond Carbon Neutral	-0.35
Total Recycled Content	45%
EPD	EcoFlex Matrix EPD
HPD	EcoFlex Matrix HPD
Material Health	Declare Red List Free
NSF 140	<a href="#">EcoFlex Matrix - NSF 140 Gold</a>
LEED	<a href="#">Calculate LEED on Ecomedes</a>
Indoor Air Quality	GLP 1171
Mindful Materials	Participates
MindClick Rating	Achiever
End of Life	ReCover
Country Of Origin	USA

## Packaging

Feature	Description
Square Yards Per Carton	8.00
Pieces per Carton	24
Cartons Per Pallet	44
Weight Per Carton	28.080
Weight per Piece	1.17

## Warranties

Lifetime Limited Carpet Tile Warranty, Lifetime Limited Colorfastness to Light, 10 Year Limited Colorfastness to Atmospheric Contaminants, 10 Year Limited Stain Warranty, Lifetime Static