

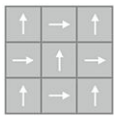
Motivated Movement

Overview

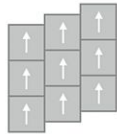


Feature	Description
Collection	Taking Steps
Style	Motivated Movement (GT465)
Product Type	Carpet Tile
Size	24 in x 24 in
Construction	Tufted
Surface Appearance	Textured Patterned Loop
Fiber	Duracolor® Tricor Premium Nylon
Dye Method	Solution Dyed
Stain Release Technology	Permanent, Built into the Fiber
Soil Release Technology	EcoSentry Soil Protection
Backing	Ecoflex One
Pile Weight	18 oz/yd ² (610 g/m ²)
Gauge	1/12 (47.00 rows per 10cm)
Stitches per Inch	13 (51.2 per 10cm)
Installation	Glue Down, FlexLok
Installation Method	Quarter Turn, Vertical Ashlar, Brick Ashlar, Multi Directional
Recommended Adhesive	Enpress, M700 Plus, FlexLok+ Tabs, Total Bond

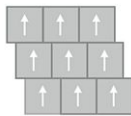
Recommended Installation Methods



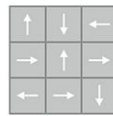
Quarter Turn



Vertical Ashlar



Brick Ashlar



Multi Directional

Colorways



Franklin

Color code: 565
Style number: GT465



Tennelli

Color code: 566
Style number: GT465



Terese

Color code: 853
Style number: GT465



Frizzle

Color code: 958
Style number: GT465



Ramon

Color code: 855
Style number: GT465



Henry

Color code: 955
Style number: GT465

Colorways



LI

Color code: 858
Style number: GT465



Hudson

Color code: 969
Style number: GT465



Wright

Color code: 956
Style number: GT465

Testing

Feature	Description
TARR Rating	Heavy
GSA Stain Release	Pass
Flammability	(ASTM E648) Class 1 - Glue Down
Static Propensity	(AATC 134) Under 3.5 KV
Smoke Density	(ASTM E662) Less than 450

Sustainability

Feature	Description
Embodied Carbon	5.19 kg CO2e/sq m2
Carbon Handprint	-5.45 kg CO2e/sq m2
Beyond Carbon Neutral	-0.26
Total Recycled Content	74%
EPD	EcoFlex ONE EPD
HPD	EcoFlex ONE HPD
Material Health	Declare Red List Free
NSF 140	EcoFlex ONE - NSF 140 Platinum
LEED	Calculate LEED on Ecomedes
Mindful Materials	Participates
MindClick Rating	Achiever
End of Life	ReCover
Country Of Origin	USA

Packaging

Feature	Description
Square Yards Per Carton	8.00
Pieces per Carton	18
Cartons Per Pallet	22
Weight Per Carton	44.280
Weight per Piece	2.46

Warranties

Lifetime Limited Carpet Tile Warranty, Lifetime Limited Duracolor Stain Warranty, Lifetime Static