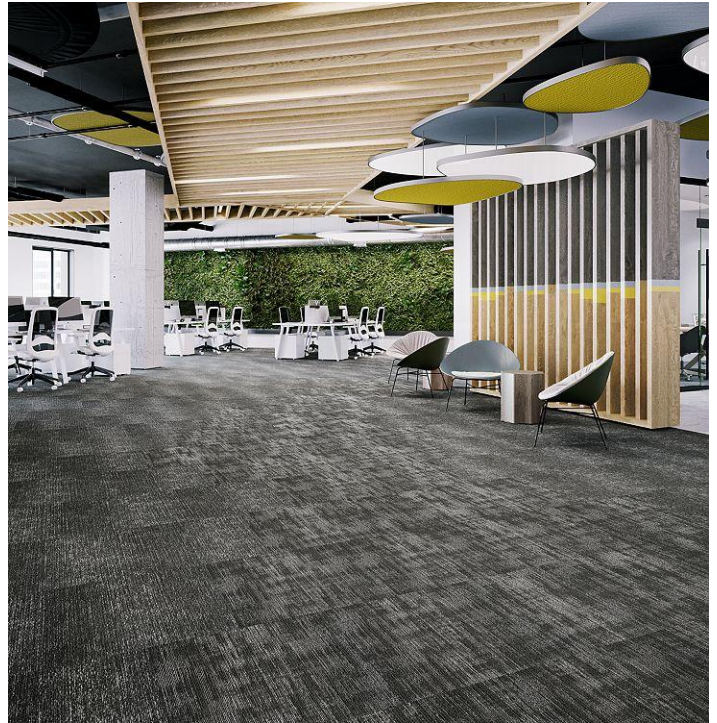


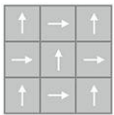
## Refined Pass

### Overview

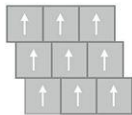
Feature	Description
Collection	Crossing Current
Style	Refined Pass (BT582)
Product Type	Carpet Tile
Size	24" X 24"
Construction	Tufted
Surface Appearance	Patterned Loop
Fiber	ColorStrand® Nylon
Dye Method	Solution Dyed
Stain Release Technology	EcoSentry Plus Stain Protection
Soil Release Technology	EcoSentry Soil Protection
Backing	Ecoflex Matrix
Pile Weight	16.00 oz/yd2 (543 g/m2)
Gauge	1/12 (47.00 rows per 10cm)
Stitches per Inch	11.4 (44.88 per 10cm)
Total Thickness	0.316" (8.03 mm)
Density	6063
Installation	FlexLok
Installation Method	Quarter Turn, Brick Ashlar, Multi-Directional
Recommended Adhesive	Enpress, M700 Plus, FlexLok+ Tabs, Total Bond



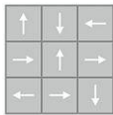
### Recommended Installation Methods



Quarter Turn



Brick Ashlar



Multi-Directional

## Colorways



### Jennings

Color code: 589  
Style number: BT582



### Platte

Color code: 898  
Style number: BT582



### Canning

Color code: 975  
Style number: BT582



### Laurel

Color code: 976  
Style number: BT582



### Alder

Color code: 978  
Style number: BT582



### Firth

Color code: 979  
Style number: BT582

## Colorways



### Seneca

Color code: 988  
Style number: BT582



### Dakota

Color code: 989  
Style number: BT582

## Testing

Feature	Description
TARR Rating	Heavy
GSA Stain Release	Pass
Flammability	(ASTM E648) Class 1 - Glue Down
Static Propensity	(AATC 134) Under 3.5 KV
Smoke Density	(ASTM E662) Less than 450

## Sustainability

Feature	Description
Embodied Carbon	7.19 kg CO2e/sq m2
Carbon Handprint	-7.55 kg CO2e/sq m2
Beyond Carbon Neutral	-0.36
Total Recycled Content	45%
Pre-Consumer Recycled Content	45%
EPD	EcoFlex Matrix EPD
HPD	EcoFlex Matrix HPD
Material Health	Declare Red List Free
NSF 140	<a href="#">EcoFlex Matrix - NSF 140 Gold</a>
LEED	<a href="#">Calculate LEED on Ecomedes</a>
Indoor Air Quality	GLP 1171
The Waterways Project	Eligible
Mindful Materials	Participates
MindClick Rating	Achiever
End of Life	ReCover
Country Of Origin	USA

## Packaging

Feature	Description
Square Yards Per Carton	10.67
Cartons Per Pallet	22
Weight Per Carton	37.92

## Warranties

Lifetime Limited Carpet Tile Warranty, Lifetime Limited Colorfastness to Light, 10 Year Limited Colorfastness to Atmospheric Contaminants, 10 Year Limited Stain Warranty, Lifetime Static