

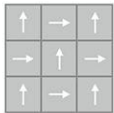
Step In Style II

Overview

Feature	Description
Collection	Tuff Stuff II
Style	Step In Style II (GT312)
Product Type	Carpet Tile
Size	24" X 24"
Construction	Walk-Off Tile
Surface Appearance	Textured Performance Cut & Loop
Stain Release Technology	Permanent, Built into Fiber
Soil Release Technology	EcoSentry Soil Protection
Backing	EcoFlex NXT
Pile Weight	30.00 oz/lyd2 (1017 g/m2)
Gauge	0
Stitches per Inch	10 (39.37 per 10cm)
Total Thickness	0.317" (8.05 mm)
Density	7448
Installation	Glue Down
Installation Method	Quarter Turn, Monolithic, Brick Ashlar, Vertical Ashlar, Multi-Directional
Recommended Adhesive	Enpress



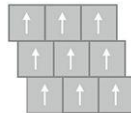
Recommended Installation Methods



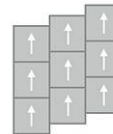
Quarter Turn



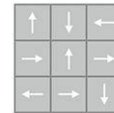
Monolithic



Brick Ashlar



Vertical Ashlar



Multi-Directional

Colorways



Walnut

Color code: 859
Style number: GT312



Cobalt

Color code: 955
Style number: GT312



Iron Ore

Color code: 983
Style number: GT312



Obsidian

Color code: 989
Style number: GT312

Testing

Feature	Description
TARR Rating	Severe
GSA Stain Release	Pass
Flammability	(ASTM E648) Class 1 - Glue Down
Static Propensity	(AATC 134) Under 3.5 KV
Smoke Density	(ASTM E662) Less than 450

Sustainability

Feature	Description
Embodied Carbon	15.1 kg CO2e/sq m2
Carbon Handprint	-15.855 kg CO2e/sq m2
Beyond Carbon Neutral	-0.755
Pre-Consumer Recycled Content	51%
EPD	EcoFlex NXT EPD
HPD	EcoFlex NXT HPD
Material Health	Declare Red List Free
NSF 140	EcoFlex NXT - NSF 140 Gold
LEED	Calculate LEED on Ecomedes
Indoor Air Quality	GLP 1098
Mindful Materials	Participates
MindClick Rating	Achiever
End of Life	ReCover
Country Of Origin	USA

Packaging

Feature	Description
Square Yards Per Carton	6.22
Cartons Per Pallet	20
Weight Per Carton	55.16