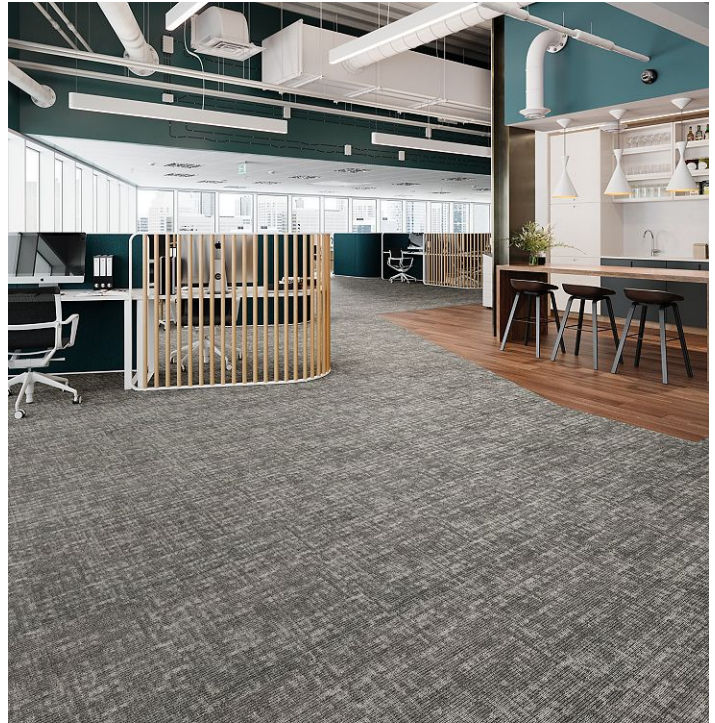


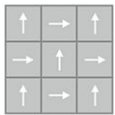
Textural Reconnect

Overview

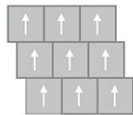
| Feature | Description |
|--------------------------|--|
| Collection | Renewed Outlook |
| Style | Textural Reconnect (BT591) |
| Product Type | Carpet Tile |
| Size | 24 in x 24 in |
| Construction | Tufted |
| Surface Appearance | Textured Patterned Loop |
| Fiber | ColorStrand® Nylon |
| Dye Method | Solution Dyed |
| Stain Release Technology | EcoSentry Plus Stain Protection |
| Soil Release Technology | EcoSentry Soil Protection |
| Backing | Ecoflex Matrix |
| Pile Weight | 15 oz/yd ² (509 g/m ²) |
| Gauge | 1/12 (47.00 rows per 10 cm) |
| Stitches per Inch | 12.3 (48.4 per 10cm) |
| Pile Thickness | 0.099 |
| Installation | FlexLok |
| Installation Method | Quarter Turn, Monolithic, Vertical Ashlar, Brick Ashlar, Multi Directional |
| Recommended Adhesive | Enpress, M700 Plus, FlexLok+ Tabs, Total Bond |



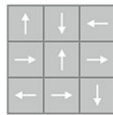
Recommended Installation Methods



Quarter Turn



Brick Ashlar



Multi Directional

Colorways



Shadow Grey

Color code: 868
Style number: BT591



Harmony

Color code: 557
Style number: BT591



Ebony Slate

Color code: 989
Style number: BT591



Inky Blue

Color code: 565
Style number: BT591



Olive Grove

Color code: 657
Style number: BT591



Georgian Brick

Color code: 257
Style number: BT591

Colorways



Fieldstone

Color code: 775
Style number: BT591

Testing

| Feature | Description |
|-------------------|---------------------------------|
| TARR Rating | Heavy |
| Flammability | (ASTM E648) Class 1 - Glue Down |
| Static Propensity | (AATC 134) Under 3.5 KV |
| Smoke Density | (ASTM E662) Less than 450 |

Sustainability

| Feature | Description |
|------------------------|---|
| Embodied Carbon | 6.67 kg CO2e/sq m2 |
| Carbon Handprint | -7.00 kg CO2e/sq m2 |
| Beyond Carbon Neutral | -0.33 |
| Total Recycled Content | 45% |
| EPD | EcoFlex Matrix EPD |
| HPD | EcoFlex Matrix HPD |
| Material Health | Declare Red List Free |
| NSF 140 | EcoFlex Matrix - NSF 140 Gold |
| LEED | Calculate LEED on Ecomedes |
| Indoor Air Quality | GLP 1171 |
| Mindful Materials | Participates |
| MindClick Rating | Achiever |
| End of Life | ReCover |
| Country Of Origin | USA |

Packaging

| Feature | Description |
|-------------------------|--------------------|
| Square Yards Per Carton | 10.67 |
| Pieces per Carton | 24 |
| Cartons Per Pallet | 22 |
| Weight Per Carton | 37.440 |
| Weight per Piece | 1.5599999999999998 |

Warranties

Lifetime Limited Carpet Tile Warranty, Lifetime Limited Colorfastness to Light, 10 Year Limited Colorfastness to Atmospheric Contaminants, 10 Year Limited Stain Warranty, Lifetime Static