

Urban Model

Overview

Feature	Description
Collection	Smart City
Style	Urban Model (GT429)
Product Type	Carpet Tile
Size	12" X 36"
Construction	Pattern Perfect
Surface Appearance	Textured Patterned Loop
Fiber	Duracolor® Tricor Premium Nylon
Dye Method	Solution Dyed
Stain Release Technology	Permanent, Built into Fiber
Soil Release Technology	EcoSentry Soil Protection
Backing	EcoFlex ONE
Pile Weight	22.00 oz/yd ² (746 g/m ²)
Gauge	1/12 (47.00 rows per 10 cm)
Stitches per Inch	28.5 (112.2 per 10cm)
Total Thickness	0.421" (10.69 mm)
Density	6236
Installation	Glue Down, FlexLok
Installation Method	Half Lap, Brick Ashlar, Basket Weave, Plank Half Lap Half Lap, Random, Herringbone
Recommended Adhesive	Enpress, M700 Plus, FlexLok+ Tabs, Total Bond



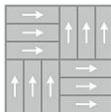
Recommended Installation Methods



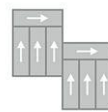
Half Lap



Brick Ashlar



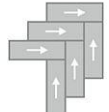
Basket Weave



Plank Half Lap



Random



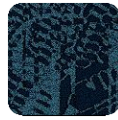
Herringbone

Colorways



Midtown

Color code: 949
Style number: GT429



Waterfront

Color code: 965
Style number: GT429



Downtown

Color code: 967
Style number: GT429

Testing

Feature	Description
TARR Rating	Heavy
GSA Stain Release	Pass
Flammability	(ASTM E648) Class 1 - Glue Down
Static Propensity	(AATC 134) Under 3.5 KV
Smoke Density	(ASTM E662) Less than 450

Sustainability

Feature	Description
Embodied Carbon	5.71 kg CO2e/sq m2
Carbon Handprint	-5.99 kg CO2e/sq m2
Beyond Carbon Neutral	-0.28
Total Recycled Content	74%
Pre-Consumer Recycled Content	64%
Post-Consumer Recycled Content	10%
EPD	EcoFlex ONE EPD
HPD	EcoFlex ONE HPD
Material Health	Declare Red List Free
NSF 140	EcoFlex ONE - NSF 140 Platinum
LEED	Calculate LEED on Ecomedes
Indoor Air Quality	GLP 1171
Mindful Materials	Participates
MindClick Rating	Achiever
End of Life	ReCover
Country Of Origin	USA

Packaging

Feature	Description
Square Yards Per Carton	4.67
Cartons Per Pallet	44
Weight Per Carton	32.2

Warranties

Lifetime Limited Carpet Tile Warranty, Lifetime Limited Duracolor Stain Warranty, Lifetime Static